



MAESTRO APARTMENTS E3  
**2 bedroom apartment**

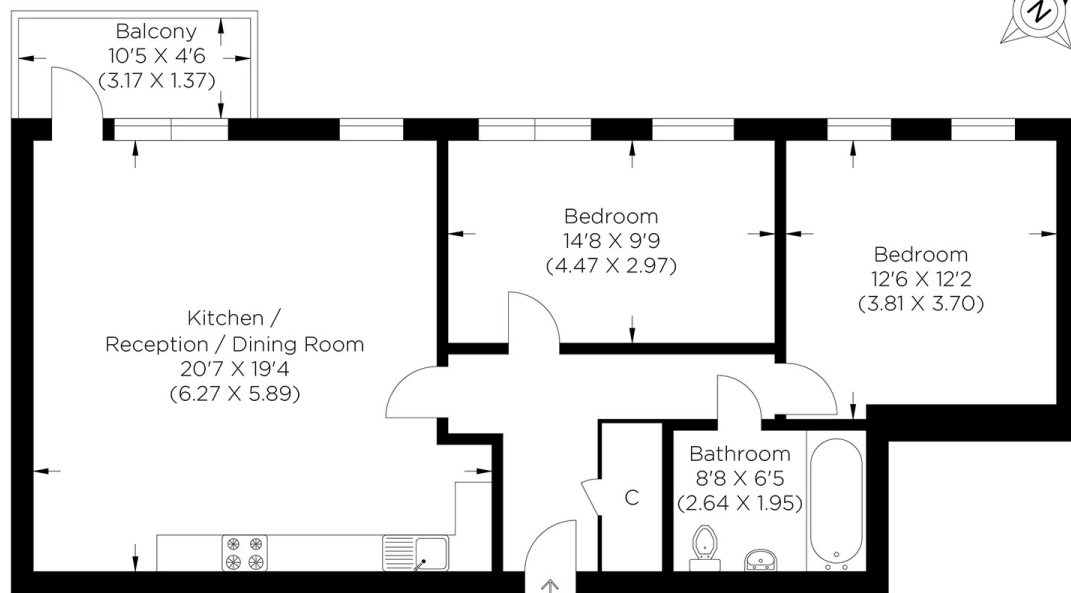
**£425,000**  
SOLD



# MAESTRO APARTMENTS E3

This spacious two-bedroom apartment is in the sought-after canalside Maestro Apartments, Violet Road, Bow E3 development. It offers a large, open-plan kitchen/living room, a dining area and two generously sized double bedrooms. Added features include a larger-than-average private balcony and a residents' roof terrace. Maestro Apartments is just a few minutes from Devons Road DLR station, which has convenient access to Canary Wharf and Westfield Stratford City shopping centres and a quick connection to central London. The 31-acre nature reserve Tower Hamlets Cemetery Park and renovated Bartlett Park with adventure playground, outdoor gym and dog park are within a short walking distance. This fantastic apartment has no chain, and we recommend your earliest viewing.

Borough: Tower Hamlets\* Council Tax: D\* EPC: B Lease Term: 115 years\* Service Charge: £4,600\* Ground Rent: £200\*  
Nearest Station: Devons Road (0.21 miles) Material Information: [www.alexneil.com/material-information](http://www.alexneil.com/material-information)



Second Floor

Approximate gross internal area  
76.99 sq m / 828.71 sq ft

**Canary Wharf & Docklands Office**  
2 Westferry Road, Canary Wharf, London E14 8JT

t: 020 7537 9859 e: [canarywharf@alexneil.com](mailto:canarywharf@alexneil.com)

Disclaimer: Property descriptions are subjective and used in good faith as an opinion rather than statements of fact. The owner provided information relating to title, tenure, service charges and ground rent information. Therefore, please make specific enquiries to ensure that our descriptions match your expectations of the property. Floor plan measurements are approximate and for illustrative purposes only. Furthermore, we have not tested any services, systems or appliances at this property. And we strongly recommend that you verify all the provided information on inspection and that your surveyor and conveyancer further confirm details. Also, market conditions and property values regularly fluctuate. And showcased sold properties demonstrate our previous successes rather than indicate live property values. \*As advised by the owner. \*\*Property sold subject to contract.



# ALEX NEIL

ESTATE AGENTS SINCE 1984

2024 signifies our **40th Anniversary**, and we are immensely proud to have reached this impressive longevity milestone. In celebration, we launched an **exceptional promotion** for sellers, affording them increased marketing exposure for free!

**40 years of expertise:** With four decades of experience, we bring a wealth of knowledge and expertise. Our durability is a testament to the trust satisfied clients place in us. We understand the nuances of the diverse neighbourhoods we cover. Our local expertise allows us to provide tailored solutions, whether you're buying or selling, allowing you to move with confidence.



ALEX NEIL

ESTATE AGENTS SINCE 1984

[www.alexneil.com](http://www.alexneil.com)