



WICK LANE E3
2 bedroom apartment

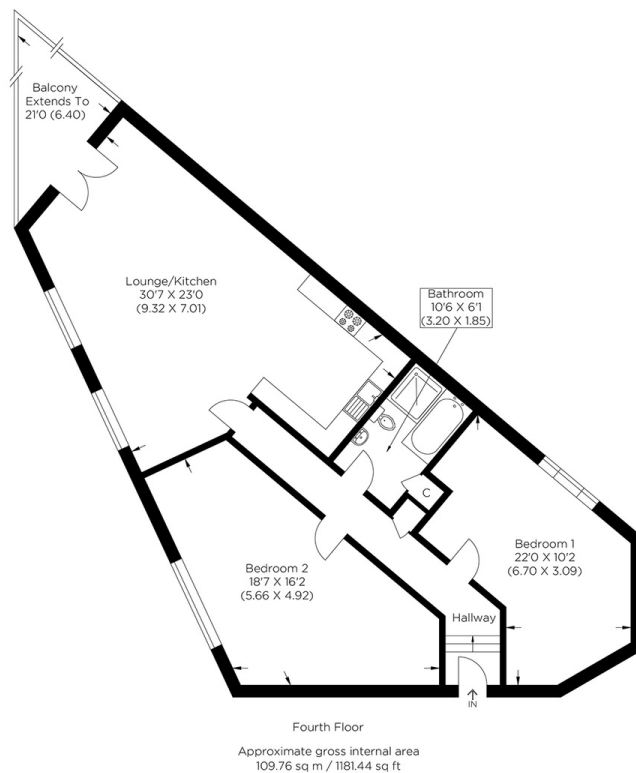
£625,000
SOLD STC**



WICK LANE E3

An extraordinarily large two-bedroom apartment with parking and unobstructed views over the River Lee and Olympic Park, finished to a high specification in Wick Lane, Hackney Wick E3. This sizeable home offers the perfect combination of space and luxurious living. The results of upgrades are fantastic, with engineered oak floor, handmade tiles in the bathroom, and a German Kitchen with Neff appliances, to name just a few. The accommodation's layout maximises natural light and exquisite views over the water. The accommodation comprises a generous open-plan style living/dining/kitchen, two large bedrooms - one with connections for an en-suite, a recently renovated bathroom, a private balcony, and abundant storage options. The location of 417 Riverside is superb, with excellent transport links and the famous Victoria Park, Westfield Stratford and highly rated schools within walking distance. The owners are in the process of buying a share of freehold which will be ready on completion.

Borough: Tower Hamlets* Council Tax: E* EPC: D Lease Term: 107 years* Service Charge: £3,500* Ground Rent: £250*
Nearest Station: Pudding Mill Lane (0.39 miles) Material Information: www.alexneil.com/material-information



Canary Wharf & Docklands Office
2 Westferry Road, Canary Wharf, London E14 8JT

t: 020 7537 9859 e: canarywharf@alexneil.com

Disclaimer: Property descriptions are subjective and used in good faith as an opinion rather than statements of fact. The owner provided information relating to title, tenure, service charges and ground rent information. Therefore, please make specific enquiries to ensure that our descriptions match your expectations of the property. Floor plan measurements are approximate and for illustrative purposes only. Furthermore, we have not tested any services, systems or appliances at this property. And we strongly recommend that you verify all the provided information on inspection and that your surveyor and conveyancer further confirm details. Also, market conditions and property values regularly fluctuate. And showcased sold properties demonstrate our previous successes rather than indicate live property values. *As advised by the owner. **Property sold subject to contract.

ALEX NEIL

ESTATE AGENTS SINCE 1984

2024 signifies our **40th Anniversary**, and we are immensely proud to have reached this impressive longevity milestone. In celebration, we launched an **exceptional promotion** for sellers, affording them increased marketing exposure for free!

40 years of expertise: With four decades of experience, we bring a wealth of knowledge and expertise. Our durability is a testament to the trust satisfied clients place in us. We understand the nuances of the diverse neighbourhoods we cover. Our local expertise allows us to provide tailored solutions, whether you're buying or selling, allowing you to move with confidence.



ALEX NEIL

ESTATE AGENTS SINCE 1984

www.alexneil.com