



MARNER POINT E3
3 bedroom apartment

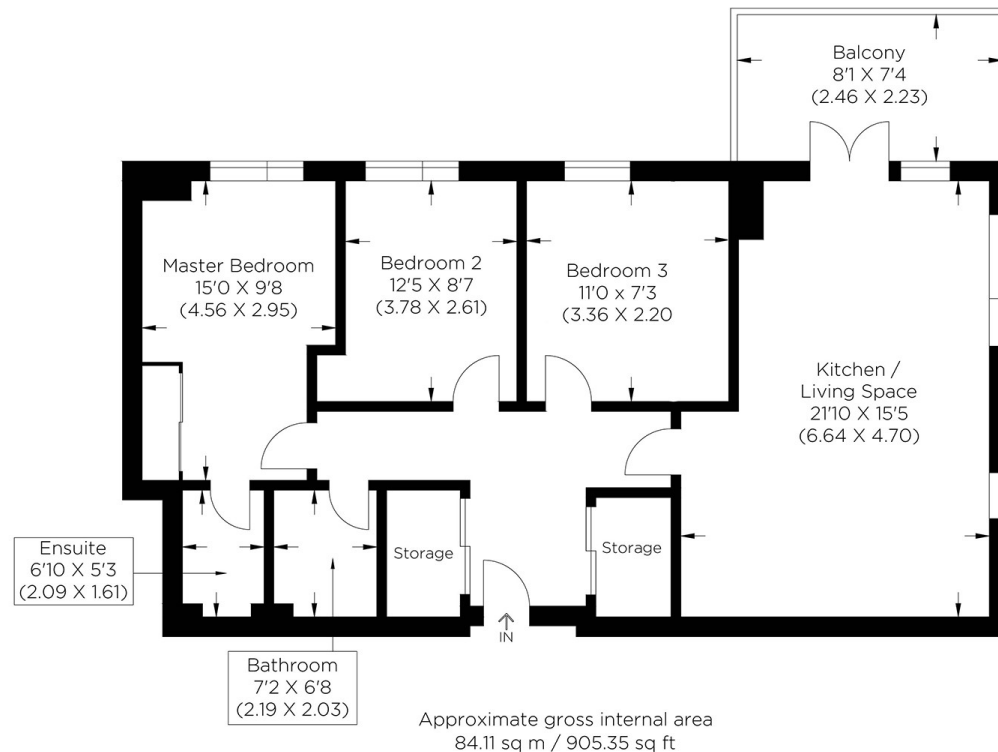
£525,000
LEASEHOLD



MARNER POINT E3

We present this thoughtfully designed three-bedroom apartment in Marner Point, Jefferson Plaza, Bow, E3. The apartment's intelligent design maximises natural light and shows the incredible far-reaching views over London. The generous accommodation layout flows impeccably and comprises a large open-plan kitchen/living/dining area with access to the private balcony. The living areas' floor-to-ceiling windows flood with sunlight, giving you a wonderful place to entertain, relax, or work from home. On the other side of the apartment, you have the three bedrooms, family bathroom, en-suite to the main bedroom and plenty of storage options. Jefferson Plaza is ideal for commuters as you are just minutes from Bromley by Bow. Residents benefit from the concierge service, gym, and other amenities such as a GP and a Sainsburys.

Borough: Tower Hamlets* Council Tax: E* EPC: B Lease Term: 115 years* Service Charge: £3,500* Ground Rent: £350*
Nearest Station: Bromley-by-Bow (0.03 miles) Material Information: www.alexneil.com/material-information



Canary Wharf & Docklands Office
2 Westferry Road, Canary Wharf, London E14 8JT

t: 020 7537 9859 e: canarywharf@alexneil.com

Disclaimer: Property descriptions are subjective and used in good faith as an opinion rather than statements of fact. The owner provided information relating to title, tenure, service charges and ground rent information. Therefore, please make specific enquiries to ensure that our descriptions match your expectations of the property. Floor plan measurements are approximate and for illustrative purposes only. Furthermore, we have not tested any services, systems or appliances at this property. And we strongly recommend that you verify all the provided information on inspection and that your surveyor and conveyancer further confirm details. Also, market conditions and property values regularly fluctuate. And showcased sold properties demonstrate our previous successes rather than indicate live property values. *As advised by the owner. **Property sold subject to contract.



ALEX NEIL

ESTATE AGENTS SINCE 1984

2024 signifies our **40th Anniversary**, and we are immensely proud to have reached this impressive longevity milestone. In celebration, we launched an **exceptional promotion** for sellers, affording them increased marketing exposure for free!

40 years of expertise: With four decades of experience, we bring a wealth of knowledge and expertise. Our durability is a testament to the trust satisfied clients place in us. We understand the nuances of the diverse neighbourhoods we cover. Our local expertise allows us to provide tailored solutions, whether you're buying or selling, allowing you to move with confidence.



ALEX NEIL

ESTATE AGENTS SINCE 1984

www.alexneil.com