



ARTISAN APARTMENTS E15
2 bedroom apartment

£450,000
SOLD STC**

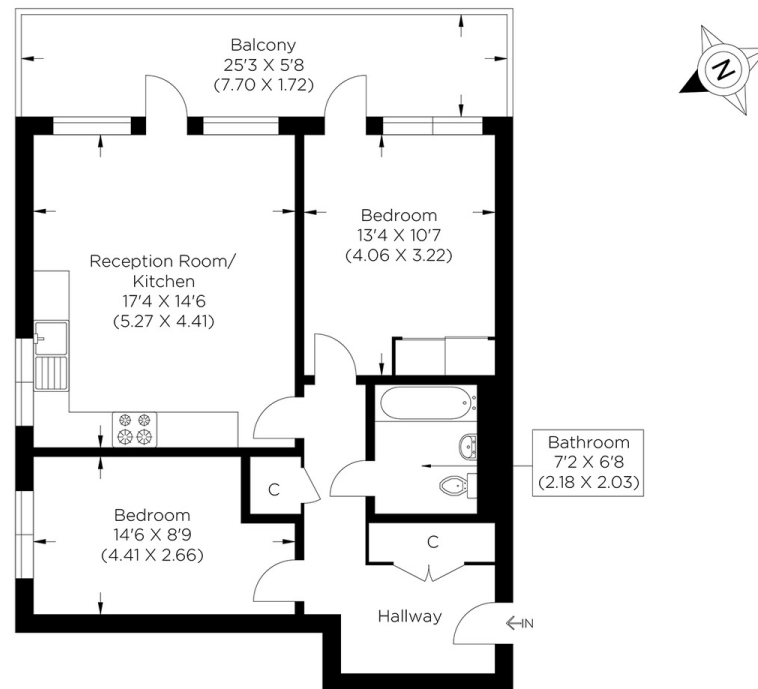


ARTISAN APARTMENTS E15

Both spacious and bright with a wealth of outside space and gorgeous views, this two-bedroom apartment in Artisan Apartments, Montford Place, Legacy Wharf, Stratford E15, is a must-see. This sixth-floor apartment has abundant sunlight, and you can enjoy the rays from your full-width balcony. The interior is equally as spacious, with two generous bedrooms, an open plan kitchen/living/dining area, a family bathroom and multiple storage cupboards. The apartment's flow is superb, with access to the balcony through the reception room and the main bedroom, allowing you to create a cool breeze throughout the summer. Presented in excellent condition, you can immediately move in and enjoy it! Legacy Wharf has fantastic links to Stratford from Pudding Mill Lane and Bromley-by-Bow stations. Just 15 minutes from Canary Wharf and a short walk to Olympic Park, this home is ideal for those looking for convenience and having all amenities and leisure right on their doorstep.

Borough: Newham* Council Tax: D* EPC: B Lease Term: 995 years* Service Charge: £2,824* Ground Rent: £350*

Nearest Station: Pudding Mill Lane (0.15 miles) Material Information: www.alexneil.com/material-information



Sixth Floor
Approximate gross internal area
65.49 sq m / 704.92 sq ft



Canary Wharf & Docklands Office
2 Westferry Road, Canary Wharf, London E14 8JT

t: 020 7537 9859 e: canarywharf@alexneil.com

Disclaimer: Property descriptions are subjective and used in good faith as an opinion rather than statements of fact. The owner provided information relating to title, tenure, service charges and ground rent information. Therefore, please make specific enquiries to ensure that our descriptions match your expectations of the property. Floor plan measurements are approximate and for illustrative purposes only. Furthermore, we have not tested any services, systems or appliances at this property. And we strongly recommend that you verify all the provided information on inspection and that your surveyor and conveyancer further confirm details. Also, market conditions and property values regularly fluctuate. And showcased sold properties demonstrate our previous successes rather than indicate live property values. *As advised by the owner. **Property sold subject to contract.

ALEX NEIL

ESTATE AGENTS SINCE 1984

2024 signifies our **40th Anniversary**, and we are immensely proud to have reached this impressive longevity milestone. In celebration, we launched an **exceptional promotion** for sellers, affording them increased marketing exposure for free!

40 years of expertise: With four decades of experience, we bring a wealth of knowledge and expertise. Our durability is a testament to the trust satisfied clients place in us. We understand the nuances of the diverse neighbourhoods we cover. Our local expertise allows us to provide tailored solutions, whether you're buying or selling, allowing you to move with confidence.



ALEX NEIL

ESTATE AGENTS SINCE 1984

www.alexneil.com