



PROSPECT HOUSE SE16
2 bedroom apartment

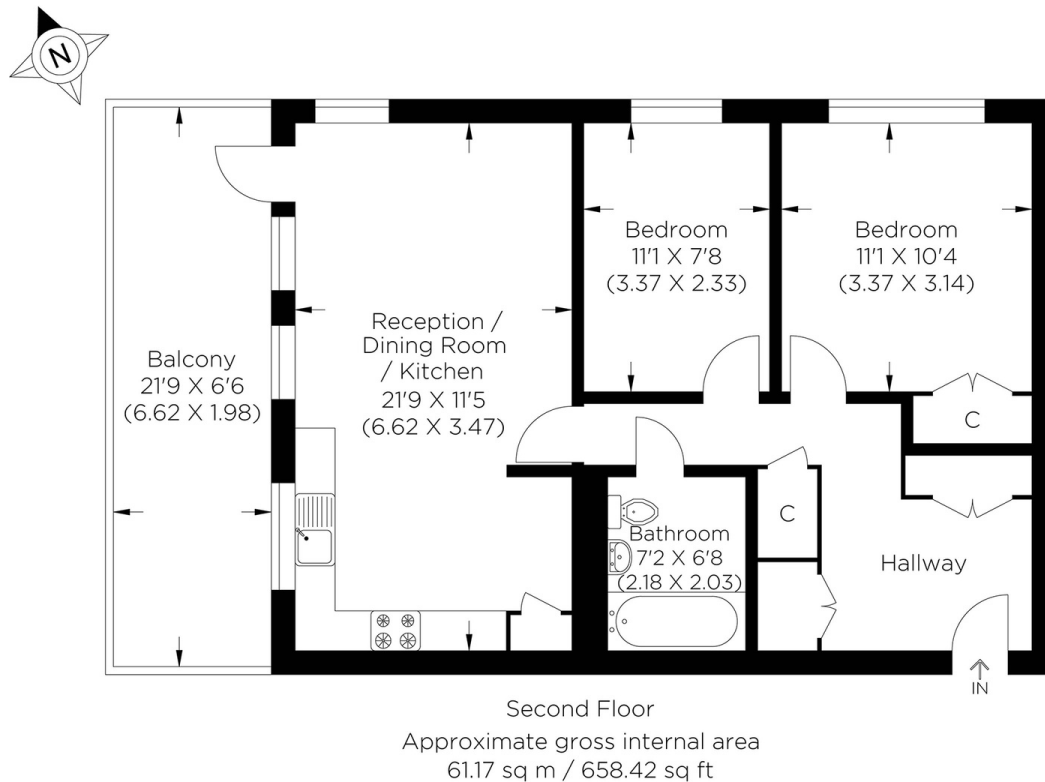
£540,000+
LEASEHOLD



PROSPECT HOUSE SE16

This bright and airy apartment is in Prospect House, Sun Passage, Bermondsey, SE16. Rarely available in this building, this property combines generous living space and cutting-edge architecture throughout. The apartment has been finished to a high specification and has the added benefit of being offered in spectacular condition. Presenting a spacious open space lounge leading to a private balcony, a fitted kitchen with integrated appliances, two double bedrooms and a modern family bathroom. Bermondsey is a popular area close to the River Thames. Shad Thames and London Bridge are within easy walking distance, and so is the City. Nearby, Bermondsey Street offers an array of restaurants, bars, boutiques, and art galleries. Maltby Street Market, Spa Terminus and Borough Market are also easily accessible.

Borough: Southwark* Council Tax: E* EPC: B Lease Term: 110 years* Service Charge: £2,935* Ground Rent: TBA
Nearest Station: Bermondsey (0.21 miles) Material Information: www.alexneil.com/material-information



Rotherhithe & Bermondsey Office
146 Lower Road, London SE16 2UG

t: 020 7237 6767 e: rotherhithe@alexneil.com

Disclaimer: Property descriptions are subjective and used in good faith as an opinion rather than statements of fact. The owner provided information relating to title, tenure, service charges and ground rent information. Therefore, please make specific enquiries to ensure that our descriptions match your expectations of the property. Floor plan measurements are approximate and for illustrative purposes only. Furthermore, we have not tested any services, systems or appliances at this property. And we strongly recommend that you verify all the provided information on inspection and that your surveyor and conveyancer further confirm details. Also, market conditions and property values regularly fluctuate. And showcased sold properties demonstrate our previous successes rather than indicate live property values. *As advised by the owner. **Property sold subject to contract.



ALEX NEIL

ESTATE AGENTS SINCE 1984

2024 signifies our **40th Anniversary**, and we are immensely proud to have reached this impressive longevity milestone. In celebration, we launched an **exceptional promotion** for sellers, affording them increased marketing exposure for free!

40 years of expertise: With four decades of experience, we bring a wealth of knowledge and expertise. Our durability is a testament to the trust satisfied clients place in us. We understand the nuances of the diverse neighbourhoods we cover. Our local expertise allows us to provide tailored solutions, whether you're buying or selling, allowing you to move with confidence.



ALEX NEIL

ESTATE AGENTS SINCE 1984

www.alexneil.com