



CHORLEY COURT E14
1 bedroom apartment

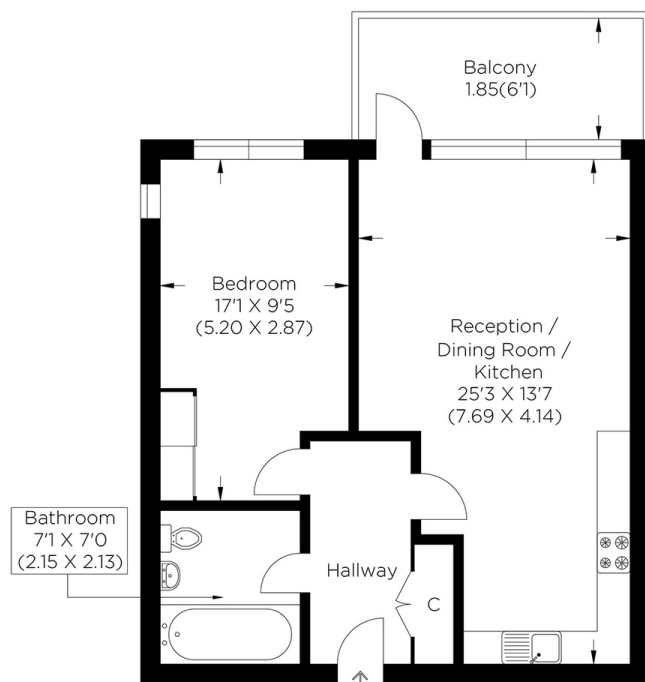
£400,000
SOLD



CHORLEY COURT E14

We present a stunning eighth-floor apartment in Chorley Court, Madeira Street, Poplar E14, within Bellway Homes Lansbury Square development near Canary Wharf. The accommodation features an extensive semi-open-plan reception room and kitchen with integrated appliances, a beautifully designed bedroom and a large bathroom suite. Further benefits include ample storage and an impressive sizeable private balcony with views of Canary Wharf, being on the top floor of this building means there is uninterrupted light throughout. This fantastic development provides a concierge service, a gym, a rooftop garden, cycle storage, retail outlets and cafes. Chorley Court's ideal location is perfect for accessing Langdon Park DLR, Canary Wharf and the Limehouse Cut. This apartment is being sold chain-free, so early viewing is advised!

Borough: Tower Hamlets* Council Tax: C* EPC: B Lease Term: 245 years* Service Charge: £1,694* Ground Rent: £250*
Nearest Station: Langdon Park (0.09 miles) Material Information: www.alexneil.com/material-information



Eighth Floor
Approximate gross internal area
55.06 sq m / 592.66 sq ft



Canary Wharf & Docklands Office
2 Westferry Road, Canary Wharf, London E14 8JT

t: 020 7537 9859 e: canarywharf@alexneil.com

Disclaimer: Property descriptions are subjective and used in good faith as an opinion rather than statements of fact. The owner provided information relating to title, tenure, service charges and ground rent information. Therefore, please make specific enquiries to ensure that our descriptions match your expectations of the property. Floor plan measurements are approximate and for illustrative purposes only. Furthermore, we have not tested any services, systems or appliances at this property. And we strongly recommend that you verify all the provided information on inspection and that your surveyor and conveyancer further confirm details. Also, market conditions and property values regularly fluctuate. And showcased sold properties demonstrate our previous successes rather than indicate live property values. *As advised by the owner. **Property sold subject to contract.

ALEX NEIL

ESTATE AGENTS SINCE 1984

2024 signifies our **40th Anniversary**, and we are immensely proud to have reached this impressive longevity milestone. In celebration, we launched an **exceptional promotion** for sellers, affording them increased marketing exposure for free!

40 years of expertise: With four decades of experience, we bring a wealth of knowledge and expertise. Our durability is a testament to the trust satisfied clients place in us. We understand the nuances of the diverse neighbourhoods we cover. Our local expertise allows us to provide tailored solutions, whether you're buying or selling, allowing you to move with confidence.



ALEX NEIL

ESTATE AGENTS SINCE 1984

www.alexneil.com