



GARRISON ROAD E3
4 bedroom town house

£795,000
SOLD

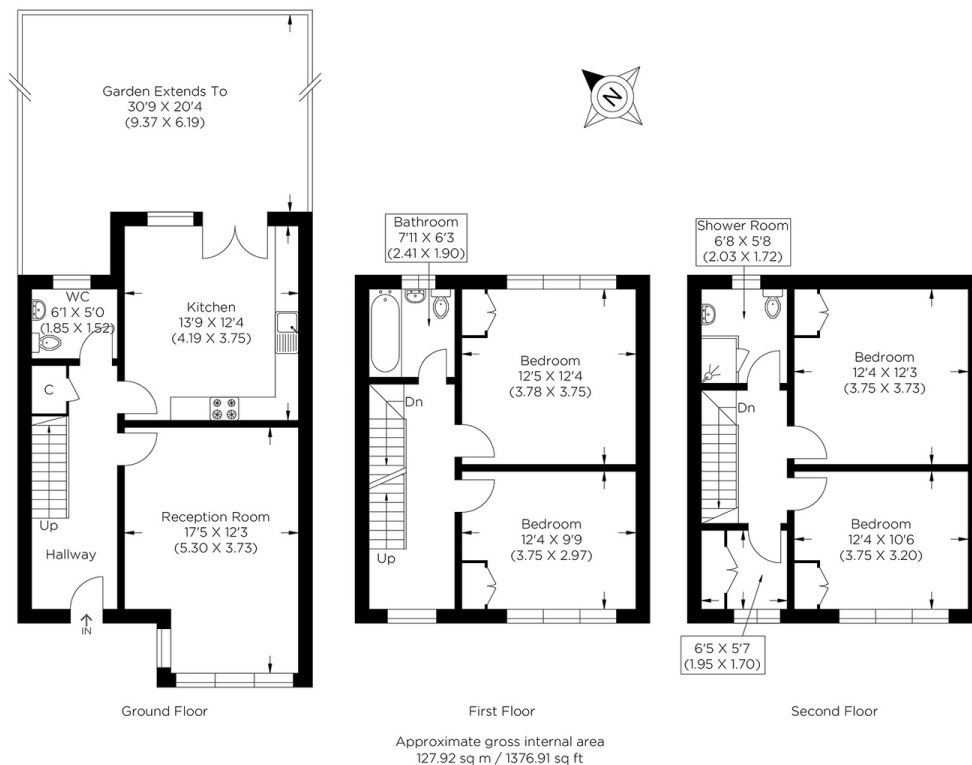


GARRISON ROAD E3

We present this extensive 1400 sq ft, four double bedroom house with private gardens in Garrison Road, Bow, E3. When crossing the front door's threshold, you will quickly appreciate the space with a generous lounge to the front of the property and a large kitchen/diner to the rear, offering access to the private rear garden. It is also complete with a downstairs toilet, large enough to house your utilities. Going upstairs, you have two double bedrooms and a bathroom on the first floor, with the remaining bedrooms, study area and shower room on the second floor. Having recently gone through re-decoration, you will be able to move in straight away. The location of the property is superb, with the famous Victoria Park just moments away and all the amenities of Roman Road within a stone's throw. The commuter options of Bow Road and Bow Church train stations are ever so slightly further afield, giving quick and efficient access to Canary Wharf and the city.

Borough: Tower Hamlets* Council Tax: E* EPC: C

Nearest Station: Bow Church (0.48 miles) Material Information: www.alexneil.com/material-information



Canary Wharf & Docklands Office
2 Westferry Road, Canary Wharf, London E14 8JT

t: 020 7537 9859 e: canarywharf@alexneil.com

Disclaimer: Property descriptions are subjective and used in good faith as an opinion rather than statements of fact. The owner provided information relating to title, tenure, service charges and ground rent information. Therefore, please make specific enquiries to ensure that our descriptions match your expectations of the property. Floor plan measurements are approximate and for illustrative purposes only. Furthermore, we have not tested any services, systems or appliances at this property. And we strongly recommend that you verify all the provided information on inspection and that your surveyor and conveyancer further confirm details. Also, market conditions and property values regularly fluctuate. And showcased sold properties demonstrate our previous successes rather than indicate live property values. *As advised by the owner. **Property sold subject to contract.

ALEX NEIL

ESTATE AGENTS SINCE 1984

2024 signifies our **40th Anniversary**, and we are immensely proud to have reached this impressive longevity milestone. In celebration, we launched an **exceptional promotion** for sellers, affording them increased marketing exposure for free!

40 years of expertise: With four decades of experience, we bring a wealth of knowledge and expertise. Our durability is a testament to the trust satisfied clients place in us. We understand the nuances of the diverse neighbourhoods we cover. Our local expertise allows us to provide tailored solutions, whether you're buying or selling, allowing you to move with confidence.



ALEX NEIL

ESTATE AGENTS SINCE 1984

www.alexneil.com