



ASHLEY COURT E3
1 bedroom apartment

£350,000
SOLD

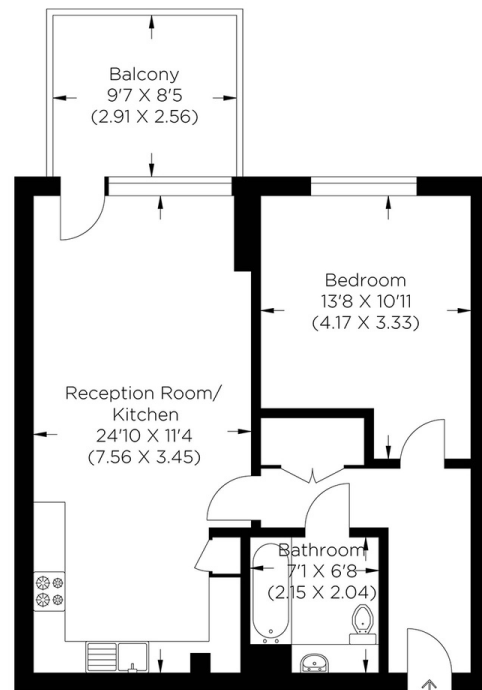


ASHLEY COURT E3

A wonderfully bright one-bedroom apartment situated perfectly to overlook the communal gardens in Ashley Court, Bolinder Way, Bow E3. The accommodation comprises a large open plan style living/dining/kitchen area with floor-to-ceiling windows that are southerly facing, so natural light floods throughout the day. You also have a large bedroom with space for plenty of wardrobes and other storage. There is a bathroom and storage cupboards. This modern apartment is ready to move straight in without lifting a finger. Ashley Court's perfect location combines the immediate scenery, transport links and local amenities. Within a stone's throw, you have Bromley-by-Bow (District and Hammersmith & City) and Bow Church (DLR) stations offering quick and easy access to the City and Canary Wharf. Close by, you also have Victoria Park, multiple gyms, pubs, restaurants and a large Tesco supermarket within a two-minute walk.

Borough: Tower Hamlets* Council Tax: C* EPC: B Lease Term: 118 years* Service Charge: £2,256* Ground Rent: £200*

Nearest Station: Bromley-by-Bow (0.25 miles) Material Information: www.alexneil.com/material-information



First Floor

Approximate gross internal area
52.90 sq m / 569.41 sq ft



Canary Wharf & Docklands Office
2 Westferry Road, Canary Wharf, London E14 8JT

t: 020 7537 9859 e: canarywharf@alexneil.com

Disclaimer: Property descriptions are subjective and used in good faith as an opinion rather than statements of fact. The owner provided information relating to title, tenure, service charges and ground rent information. Therefore, please make specific enquiries to ensure that our descriptions match your expectations of the property. Floor plan measurements are approximate and for illustrative purposes only. Furthermore, we have not tested any services, systems or appliances at this property. And we strongly recommend that you verify all the provided information on inspection and that your surveyor and conveyancer further confirm details. Also, market conditions and property values regularly fluctuate. And showcased sold properties demonstrate our previous successes rather than indicate live property values. *As advised by the owner. **Property sold subject to contract.

ALEX NEIL

ESTATE AGENTS SINCE 1984

2024 signifies our **40th Anniversary**, and we are immensely proud to have reached this impressive longevity milestone. In celebration, we launched an **exceptional promotion** for sellers, affording them increased marketing exposure for free!

40 years of expertise: With four decades of experience, we bring a wealth of knowledge and expertise. Our durability is a testament to the trust satisfied clients place in us. We understand the nuances of the diverse neighbourhoods we cover. Our local expertise allows us to provide tailored solutions, whether you're buying or selling, allowing you to move with confidence.



ALEX NEIL

ESTATE AGENTS SINCE 1984

www.alexneil.com