



NYLAND COURT SE8  
**2 bedroom apartment**

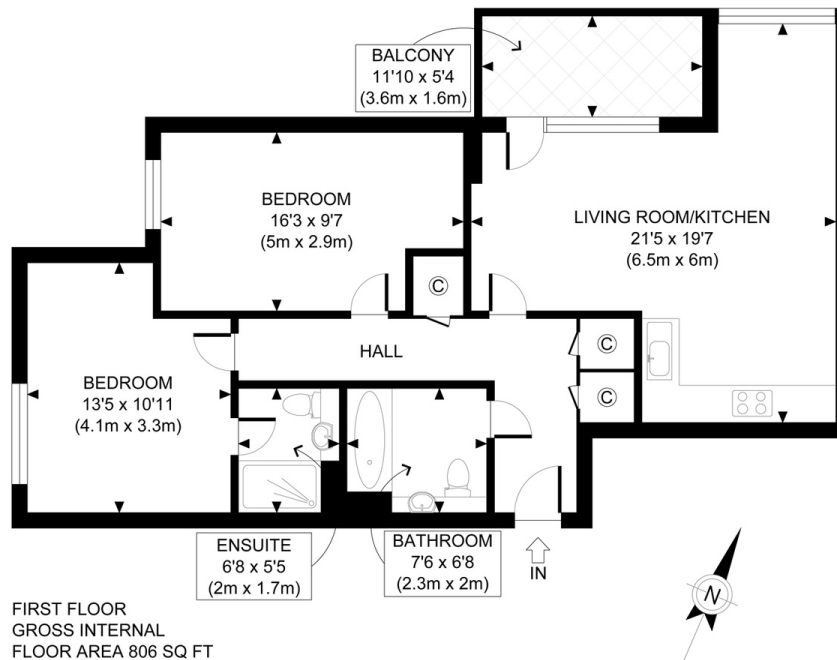
**£525,000**  
SOLD



# NYLAND COURT SE8

A stylish two-bedroom first-floor apartment in the newly developed Nyland Court, Naomi Street, Deptford SE8, forming part of the remarkable Greenland Place development. Nyland Court boasts a breathtaking roof terrace, concierge services, a gymnasium, and many other facilities nearby. The accommodation comprises a large open-plan kitchen with direct access to a private balcony with stunning views of the City, a well-designed dining area, two double bedrooms, en-suite to the master and a stylish three-piece family bathroom. Other benefits include ample storage and beautiful landscaped gardens. This contemporary property's location is ideal for Canada Water and Surrey Quays stations. Many local eateries provide choice, making each time you eat out like a new experience. The green spaces of Deptford Park and Southwark Park offer a picturesque setting in which to enjoy some exercise. We recommend your earliest viewing.

Borough: Lewisham\* Council Tax: C\* EPC: B Lease Term: 994 years\* Service Charge: £2,798\* Ground Rent: £350\*  
Nearest Station: Surrey Quays (0.45 miles) Material Information: [www.alexneil.com/material-information](http://www.alexneil.com/material-information)



APPROX. GROSS INTERNAL FLOOR AREA 806 SQ FT / 75 SQM

**Rotherhithe & Bermondsey Office**  
146 Lower Road, London SE16 2UG

t: 020 7237 6767 e: [rotherhithe@alexneil.com](mailto:rotherhithe@alexneil.com)

Disclaimer: Property descriptions are subjective and used in good faith as an opinion rather than statements of fact. The owner provided information relating to title, tenure, service charges and ground rent information. Therefore, please make specific enquiries to ensure that our descriptions match your expectations of the property. Floor plan measurements are approximate and for illustrative purposes only. Furthermore, we have not tested any services, systems or appliances at this property. And we strongly recommend that you verify all the provided information on inspection and that your surveyor and conveyancer further confirm details. Also, market conditions and property values regularly fluctuate. And showcased sold properties demonstrate our previous successes rather than indicate live property values. \*As advised by the owner. \*\*Property sold subject to contract.



# ALEX NEIL

ESTATE AGENTS SINCE 1984

2024 signifies our **40th Anniversary**, and we are immensely proud to have reached this impressive longevity milestone. In celebration, we launched an **exceptional promotion** for sellers, affording them increased marketing exposure for free!

**40 years of expertise:** With four decades of experience, we bring a wealth of knowledge and expertise. Our durability is a testament to the trust satisfied clients place in us. We understand the nuances of the diverse neighbourhoods we cover. Our local expertise allows us to provide tailored solutions, whether you're buying or selling, allowing you to move with confidence.



ALEX NEIL

ESTATE AGENTS SINCE 1984

[www.alexneil.com](http://www.alexneil.com)