



MARNER POINT E3
2 bedroom apartment

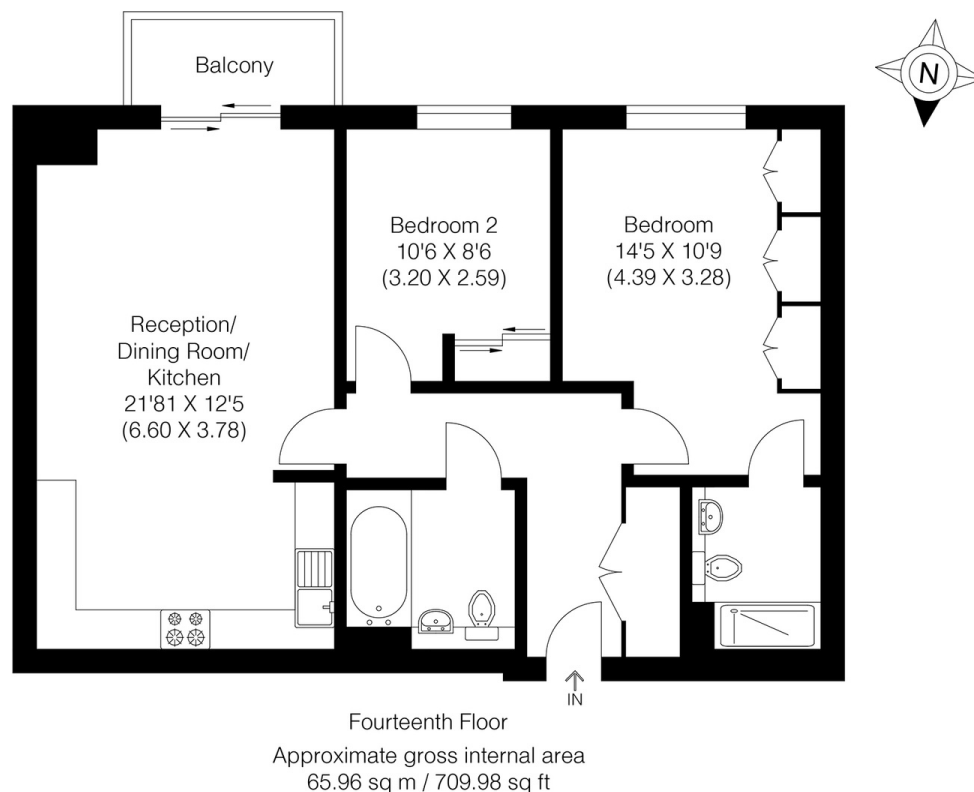
£500,000
SOLD



MARNER POINT E3

This luxurious 14th-floor apartment with spectacular views across the city and an abundance of natural light is in Marner Point, Jefferson Plaza, Bow E3. Expertly designed to maximise the wealth of space on offer, this apartment offers two double bedrooms, with en-suite to the master, a large open plan style kitchen/dining/living area which spills onto the private balcony too. In addition, you have storage cupboards and the family bathroom, plus the wonderful amenities the development offers, such as concierge services, a gym, a roof terrace and a private underground parking space. Combining this with the excellent condition and presentation, the new owners can move straight in and immediately enjoy their new lifestyle. Marner Point's location is perfect for those commuting. You have Bromley by Bow Station on your doorstep and Devons Road within easy walking distance. You have everything you need on your doorstep, surrounded by local amenities and a Sainsbury's within the development.

Borough: Tower Hamlets* Council Tax: D* EPC: B Lease Term: 112 years* Service Charge: £3,200* Ground Rent: £384*
Nearest Station: Bromley-by-Bow (0.03 miles) Material Information: www.alexneil.com/material-information



Canary Wharf & Docklands Office
2 Westferry Road, Canary Wharf, London E14 8JT

t: 020 7537 9859 e: canarywharf@alexneil.com

Disclaimer: Property descriptions are subjective and used in good faith as an opinion rather than statements of fact. The owner provided information relating to title, tenure, service charges and ground rent information. Therefore, please make specific enquiries to ensure that our descriptions match your expectations of the property. Floor plan measurements are approximate and for illustrative purposes only. Furthermore, we have not tested any services, systems or appliances at this property. And we strongly recommend that you verify all the provided information on inspection and that your surveyor and conveyancer further confirm details. Also, market conditions and property values regularly fluctuate. And showcased sold properties demonstrate our previous successes rather than indicate live property values. *As advised by the owner. **Property sold subject to contract.

ALEX NEIL

ESTATE AGENTS SINCE 1984

2024 signifies our **40th Anniversary**, and we are immensely proud to have reached this impressive longevity milestone. In celebration, we launched an **exceptional promotion** for sellers, affording them increased marketing exposure for free!

40 years of expertise: With four decades of experience, we bring a wealth of knowledge and expertise. Our durability is a testament to the trust satisfied clients place in us. We understand the nuances of the diverse neighbourhoods we cover. Our local expertise allows us to provide tailored solutions, whether you're buying or selling, allowing you to move with confidence.



ALEX NEIL

ESTATE AGENTS SINCE 1984

www.alexneil.com