



PAVILLION HOUSE SE16  
**2 bedroom apartment**

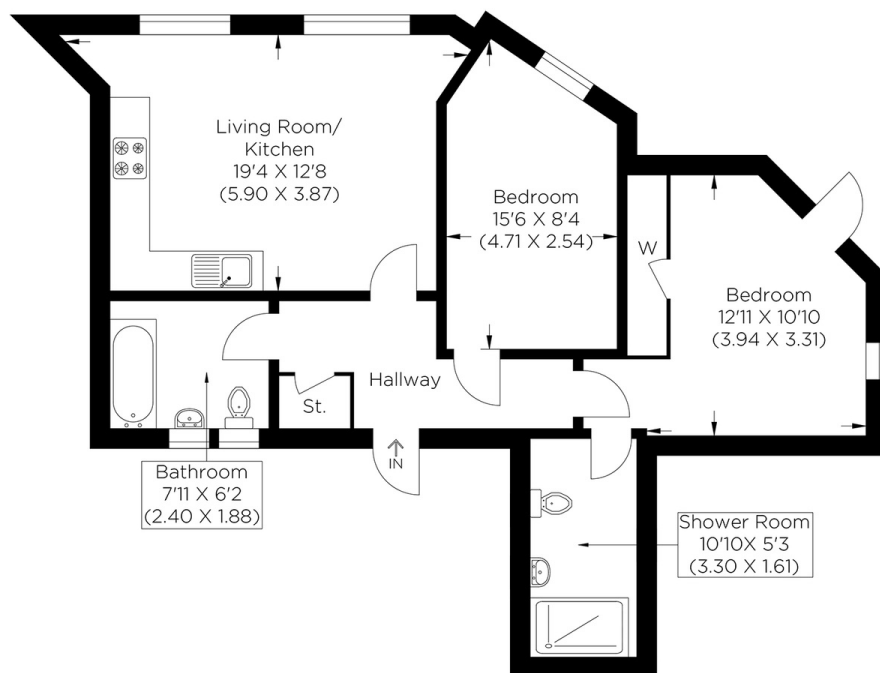
**£550,000**  
SOLD



# PAVILLION HOUSE SE16

This superb two-bedroom, fifth-floor apartment is in Pavillion House, part of the highly desired Water Gardens Square development in Canada Water SE16. The private balcony commands stunning views over the inner gardens and affords a wonderful space to relax and unwind. Internally, the neutrally decorated rooms comprise a bright, spacious, open-plan living space complemented by stunning views over the Shard and the City and ideally configured for comfortable living and entertaining friends. There are two large bedrooms, a master with en-suite and a modern four-piece family bathroom. The vast amenities within the development include a 24-hour concierge service. The wonderful green space of Stave Hill Ecological Park offers an attractive backdrop for a weekend stroll, affording breathtaking views across London. Rarely available to the market and offered chain-free, we anticipate much interest, so your earliest viewing is advised.

Borough: Southwark\* Council Tax: D\* EPC: B Lease Term: 982 years\* Service Charge: £2,479\* Ground Rent: £300\*  
Nearest Station: Canada Water (0.17 miles) Material Information: [www.alexneil.com/material-information](http://www.alexneil.com/material-information)



Fifth Floor  
Approximate gross internal area  
63.39 sq m / 682.32 sq ft

**Rotherhithe & Bermondsey Office**  
146 Lower Road, London SE16 2UG

t: 020 7237 6767 e: [rotherhithe@alexneil.com](mailto:rotherhithe@alexneil.com)

Disclaimer: Property descriptions are subjective and used in good faith as an opinion rather than statements of fact. The owner provided information relating to title, tenure, service charges and ground rent information. Therefore, please make specific enquiries to ensure that our descriptions match your expectations of the property. Floor plan measurements are approximate and for illustrative purposes only. Furthermore, we have not tested any services, systems or appliances at this property. And we strongly recommend that you verify all the provided information on inspection and that your surveyor and conveyancer further confirm details. Also, market conditions and property values regularly fluctuate. And showcased sold properties demonstrate our previous successes rather than indicate live property values. \*As advised by the owner. \*\*Property sold subject to contract.



## ALEX NEIL

ESTATE AGENTS SINCE 1984



2024 signifies our **40th Anniversary**, and we are immensely proud to have reached this impressive longevity milestone. In celebration, we launched an **exceptional promotion** for sellers, affording them increased marketing exposure for free!

**40 years of expertise:** With four decades of experience, we bring a wealth of knowledge and expertise. Our durability is a testament to the trust satisfied clients place in us. We understand the nuances of the diverse neighbourhoods we cover. Our local expertise allows us to provide tailored solutions, whether you're buying or selling, allowing you to move with confidence.



ALEX NEIL

ESTATE AGENTS SINCE 1984

[www.alexneil.com](http://www.alexneil.com)