



GRAY COURT E1  
**1 bedroom apartment**

**£325,000**  
SOLD STC\*\*

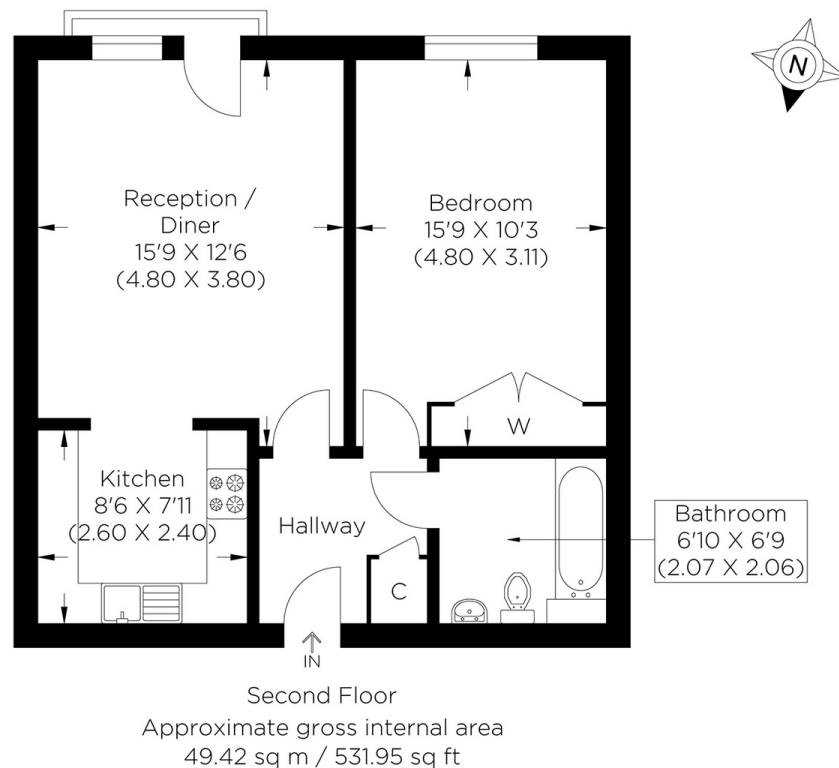




# GRAY COURT E1

This wonderfully sized, tastefully decorated one-bedroom apartment is in Gray Court, Candle Street, Stepney, E1. The floorplan size is superb and rare. The bedroom, for example, measures shy of 16 feet and is perfect for those looking for extra wardrobe space. The living area offers the same level of generosity with plenty of room to fit a sizeable dining room table and all your usual furniture. With an open-plan style kitchen, dining and living room space, the property's space is maximised to its full potential. It has resulted in a beautiful social venue to host guests. Gray Court's convenient location is between Stepney Green and Mile End underground train stations, allowing an easy commute throughout London. Staying local, you have an abundance of amenities right on your doorstep, ranging from a pharmacy to local grocery shops, restaurants and much more!

Borough: Tower Hamlets\* Council Tax: C\* EPC: B Lease Term: 118 years\* Service Charge: £2,244\* Ground Rent: £250\*  
Nearest Station: Limehouse (0.42 miles) Material Information: [www.alexneil.com/material-information](http://www.alexneil.com/material-information)



**Canary Wharf & Docklands Office**  
2 Westferry Road, Canary Wharf, London E14 8JT

t: 020 7537 9859 e: [canarywharf@alexneil.com](mailto:canarywharf@alexneil.com)

Disclaimer: Property descriptions are subjective and used in good faith as an opinion rather than statements of fact. The owner provided information relating to title, tenure, service charges and ground rent information. Therefore, please make specific enquiries to ensure that our descriptions match your expectations of the property. Floor plan measurements are approximate and for illustrative purposes only. Furthermore, we have not tested any services, systems or appliances at this property. And we strongly recommend that you verify all the provided information on inspection and that your surveyor and conveyancer further confirm details. Also, market conditions and property values regularly fluctuate. And showcased sold properties demonstrate our previous successes rather than indicate live property values. \*As advised by the owner. \*\*Property sold subject to contract.

# ALEX NEIL

ESTATE AGENTS SINCE 1984

2024 signifies our **40th Anniversary**, and we are immensely proud to have reached this impressive longevity milestone. In celebration, we launched an **exceptional promotion** for sellers, affording them increased marketing exposure for free!

**40 years of expertise:** With four decades of experience, we bring a wealth of knowledge and expertise. Our durability is a testament to the trust satisfied clients place in us. We understand the nuances of the diverse neighbourhoods we cover. Our local expertise allows us to provide tailored solutions, whether you're buying or selling, allowing you to move with confidence.



ALEX NEIL

ESTATE AGENTS SINCE 1984

[www.alexneil.com](http://www.alexneil.com)