



APHRODITE COURT E14  
**1 bedroom apartment**

**£300,000**  
SOLD

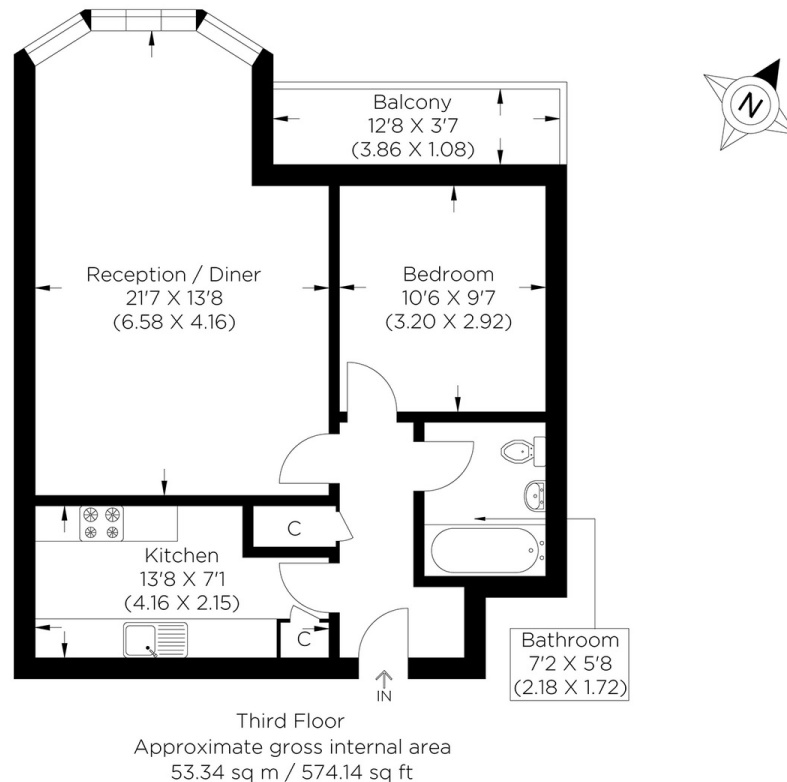




# APHRODITE COURT E14

We present a one-bedroom, third-floor apartment in Aphrodite Court, Homer Drive, Isle of Dogs E14. Aphrodite Court is part of Cyclops Wharf, a secure gated riverside development convenient for Canary Wharf access. This well-proportioned one-bedroom apartment offers generous living space and abundant light, and the separate kitchen provides plenty of workspace. The property comprises a double size bedroom with French doors opening onto a private balcony and a private parking space. The development has concierge services, a gym, a swimming pool and leisure facilities. Cyclops Wharf is moments from the local amenities of Westferry Road, and the shops, bars and restaurants of the exclusive Canary Wharf complex are also within easy reach. The local transport links include Mudchute Station (DLR), connecting you to Canary Wharf's Jubilee and Elizabeth Line Stations. Please note the service charge includes the water rates.

Borough: Tower Hamlets\* Council Tax: D\* EPC: C Lease Term: 999 years\* Service Charge: £4,800\* Ground Rent: TBA  
Nearest Station: Mudchute (0.45 miles) Material Information: [www.alexneil.com/material-information](http://www.alexneil.com/material-information)



**Canary Wharf & Docklands Office**  
2 Westferry Road, Canary Wharf, London E14 8JT

t: 020 7537 9859 e: [canarywharf@alexneil.com](mailto:canarywharf@alexneil.com)

Disclaimer: Property descriptions are subjective and used in good faith as an opinion rather than statements of fact. The owner provided information relating to title, tenure, service charges and ground rent information. Therefore, please make specific enquiries to ensure that our descriptions match your expectations of the property. Floor plan measurements are approximate and for illustrative purposes only. Furthermore, we have not tested any services, systems or appliances at this property. And we strongly recommend that you verify all the provided information on inspection and that your surveyor and conveyancer further confirm details. Also, market conditions and property values regularly fluctuate. And showcased sold properties demonstrate our previous successes rather than indicate live property values. \*As advised by the owner. \*\*Property sold subject to contract.

## ALEX NEIL

ESTATE AGENTS SINCE 1984

2024 signifies our **40th Anniversary**, and we are immensely proud to have reached this impressive longevity milestone. In celebration, we launched an **exceptional promotion** for sellers, affording them increased marketing exposure for free!

**40 years of expertise:** With four decades of experience, we bring a wealth of knowledge and expertise. Our durability is a testament to the trust satisfied clients place in us. We understand the nuances of the diverse neighbourhoods we cover. Our local expertise allows us to provide tailored solutions, whether you're buying or selling, allowing you to move with confidence.



ALEX NEIL

ESTATE AGENTS SINCE 1984

[www.alexneil.com](http://www.alexneil.com)