



REVELEY SQUARE SE16  
**1 bedroom end of terrace**

**£395,000**  
SOLD

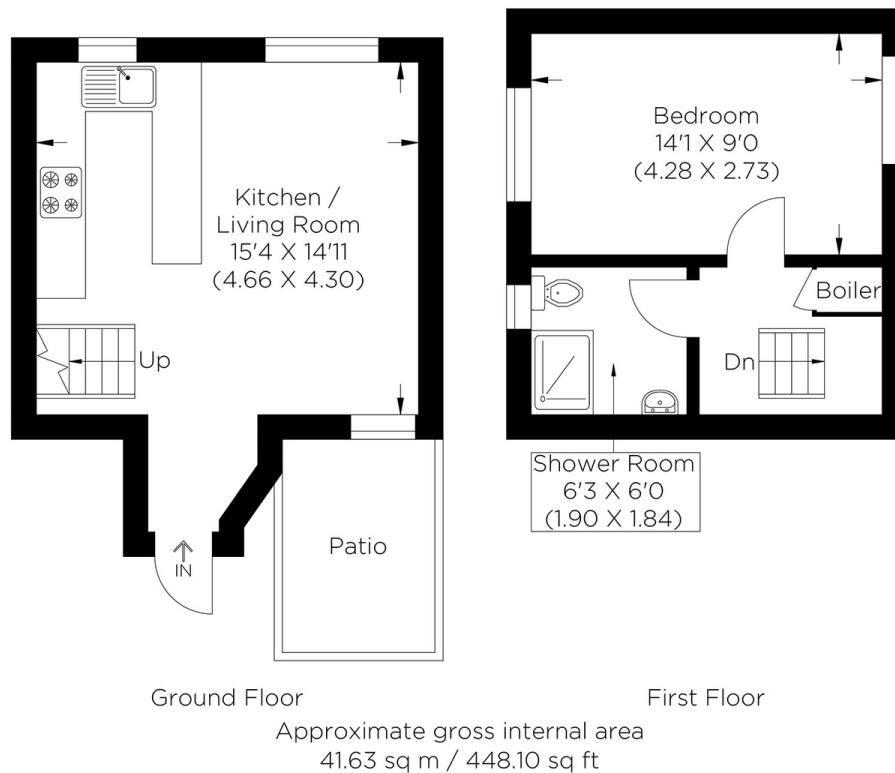


# REVELEY SQUARE SE16

This highly sought-after and rarely available one-bedroom house is within the quiet residential setting of Reveley Square, Surrey Quays SE16. The welcoming entrance opens to a large open-plan reception room and a spacious kitchen with direct access to a well-maintained communal garden. The large double bedroom and a stylish three-piece bathroom are on the first floor. This superb home has recently undergone an extensive refurbishment and further benefits from off-street parking, central heating and ample storage space. Surrey Quays retail hub is within easy reach alongside many local amenities, as is Canada Water Station providing excellent transport links. The picturesque Russia Dock Woodland offers the perfect setting for a picnic with friends, completed by a pleasant stroll to take in the sublime vistas across the London skyline. We advise booking your earliest viewing appointment.

Borough: Southwark\* Council Tax: C\* EPC: C

Nearest Station: Canada Water (0.6 miles) Material Information: [www.alexneil.com/material-information](http://www.alexneil.com/material-information)



**Rotherhithe & Bermondsey Office**  
146 Lower Road, London SE16 2UG

t: 020 7237 6767 e: [rotherhithe@alexneil.com](mailto:rotherhithe@alexneil.com)

Disclaimer: Property descriptions are subjective and used in good faith as an opinion rather than statements of fact. The owner provided information relating to title, tenure, service charges and ground rent information. Therefore, please make specific enquiries to ensure that our descriptions match your expectations of the property. Floor plan measurements are approximate and for illustrative purposes only. Furthermore, we have not tested any services, systems or appliances at this property. And we strongly recommend that you verify all the provided information on inspection and that your surveyor and conveyancer further confirm details. Also, market conditions and property values regularly fluctuate. And showcased sold properties demonstrate our previous successes rather than indicate live property values. \*As advised by the owner. \*\*Property sold subject to contract.



## ALEX NEIL

ESTATE AGENTS SINCE 1984

2024 signifies our **40th Anniversary**, and we are immensely proud to have reached this impressive longevity milestone. In celebration, we launched an **exceptional promotion** for sellers, affording them increased marketing exposure for free!

**40 years of expertise:** With four decades of experience, we bring a wealth of knowledge and expertise. Our durability is a testament to the trust satisfied clients place in us. We understand the nuances of the diverse neighbourhoods we cover. Our local expertise allows us to provide tailored solutions, whether you're buying or selling, allowing you to move with confidence.



ALEX NEIL

ESTATE AGENTS SINCE 1984

[www.alexneil.com](http://www.alexneil.com)