



TRIANGLE APARTMENTS E14  
**2 bedroom apartment**

**£425,000**  
SOLD

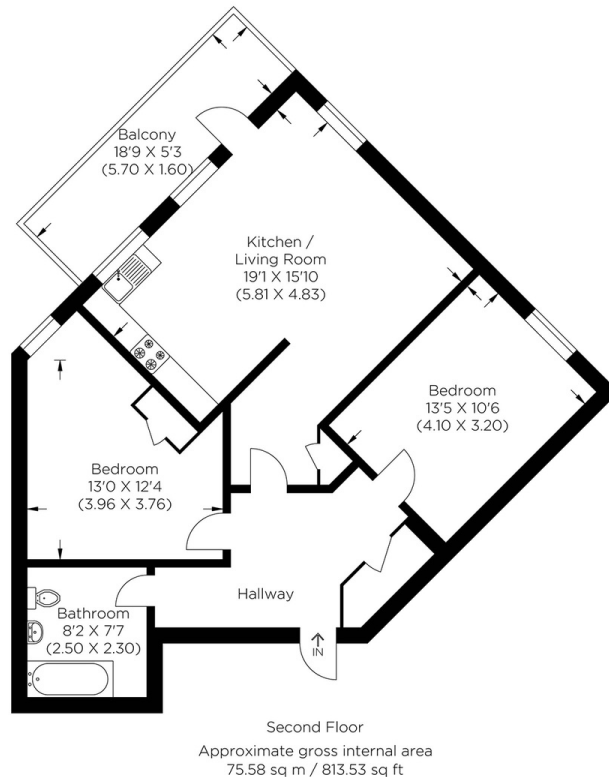




# TRIANGLE APARTMENTS E14

This impressive and beautifully proportioned property is in Triangle Apartments, Manchester Road, Isle of Dogs E14. The accommodation comprises two fantastic large bedrooms, an open-plan living/kitchen area, a three-piece bathroom suite, underfloor heating, and a large private balcony. Triangle Apartments is 1.5 miles from Canary Wharf and 0.5 miles from Mudchute DLR Station, which offers good links to The City. Canary Wharf offers a wide selection of restaurants, bars and access to the Jubilee Line and Elizabeth Line Crossrail. Mudchute Park & Farm is also within walking distance, as is the Greenwich Foot Tunnel at Island Gardens Park. This exceptionally well-presented apartment benefits from being sold chain free.

Borough: Tower Hamlets\* Council Tax: E\* EPC: B Lease Term: 102 years\* Service Charge: £1,320\* Ground Rent: £375\*  
Nearest Station: Mudchute (0.34 miles) Material Information: [www.alexneil.com/material-information](http://www.alexneil.com/material-information)



**Canary Wharf & Docklands Office**  
**2 Westferry Road, Canary Wharf, London E14 8JT**

t: 020 7537 9859 e: [canarywharf@alexneil.com](mailto:canarywharf@alexneil.com)

Disclaimer: Property descriptions are subjective and used in good faith as an opinion rather than statements of fact. The owner provided information relating to title, tenure, service charges and ground rent information. Therefore, please make specific enquiries to ensure that our descriptions match your expectations of the property. Floor plan measurements are approximate and for illustrative purposes only. Furthermore, we have not tested any services, systems or appliances at this property. And we strongly recommend that you verify all the provided information on inspection and that your surveyor and conveyancer further confirm details. Also, market conditions and property values regularly fluctuate. And showcased sold properties demonstrate our previous successes rather than indicate live property values. \*As advised by the owner. \*\*Property sold subject to contract.



# ALEX NEIL

ESTATE AGENTS SINCE 1984

2024 signifies our **40th Anniversary**, and we are immensely proud to have reached this impressive longevity milestone. In celebration, we launched an **exceptional promotion** for sellers, affording them increased marketing exposure for free!

**40 years of expertise:** With four decades of experience, we bring a wealth of knowledge and expertise. Our durability is a testament to the trust satisfied clients place in us. We understand the nuances of the diverse neighbourhoods we cover. Our local expertise allows us to provide tailored solutions, whether you're buying or selling, allowing you to move with confidence.



ALEX NEIL

ESTATE AGENTS SINCE 1984

[www.alexneil.com](http://www.alexneil.com)