



SKY VIEW TOWER E15
1 bedroom apartment

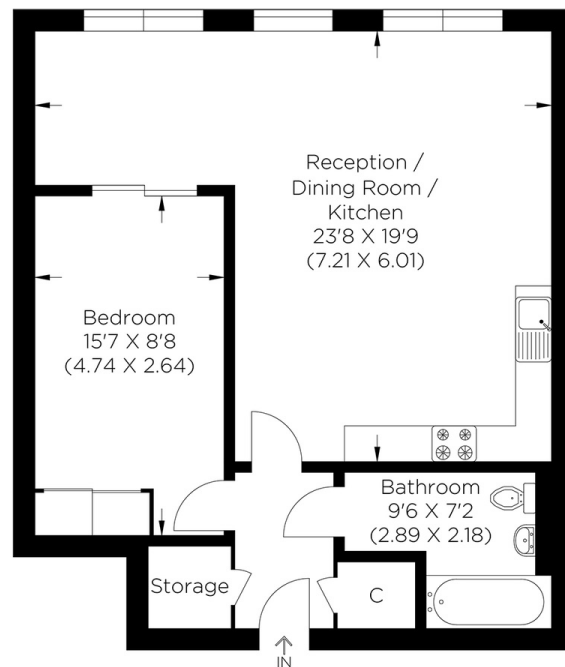
£375,000
SOLD



SKY VIEW TOWER E15

This large one-bedroom apartment in Sky View Tower, High Street, Stratford, E15, offers glorious views across London. Located on the 27th floor, you have panoramic views of the city with the floor to ceiling windows, flooding the apartment with natural light. The generous accommodation offers a large open-plan style kitchen/dining/living room, an enclosed bedroom, a separate bathroom, and several vital storage cupboards. The location brings a wealth of transport links and amenities, too. Being close to Stratford, you have Westfield and Stratford International Train Station to take advantage of. Furthermore, Bow Road and Pudding Mill Lane provide over and underground services, ideal for commuting.

Borough: Tower Hamlets* Council Tax: C* EPC: B Lease Term: 994 years* Service Charge: £2,200* Ground Rent: £300*
Nearest Station: Pudding Mill Lane (0.24 miles) Material Information: www.alexneil.com/material-information



Twenty-Seventh Floor
Approximate gross internal area
58.08 sq m / 625.16 sq ft

Canary Wharf & Docklands Office
2 Westferry Road, Canary Wharf, London E14 8JT

t: 020 7537 9859 e: canarywharf@alexneil.com

Disclaimer: Property descriptions are subjective and used in good faith as an opinion rather than statements of fact. The owner provided information relating to title, tenure, service charges and ground rent information. Therefore, please make specific enquiries to ensure that our descriptions match your expectations of the property. Floor plan measurements are approximate and for illustrative purposes only. Furthermore, we have not tested any services, systems or appliances at this property. And we strongly recommend that you verify all the provided information on inspection and that your surveyor and conveyancer further confirm details. Also, market conditions and property values regularly fluctuate. And showcased sold properties demonstrate our previous successes rather than indicate live property values. *As advised by the owner. **Property sold subject to contract.



ALEX NEIL

ESTATE AGENTS SINCE 1984

2024 signifies our **40th Anniversary**, and we are immensely proud to have reached this impressive longevity milestone. In celebration, we launched an **exceptional promotion** for sellers, affording them increased marketing exposure for free!

40 years of expertise: With four decades of experience, we bring a wealth of knowledge and expertise. Our durability is a testament to the trust satisfied clients place in us. We understand the nuances of the diverse neighbourhoods we cover. Our local expertise allows us to provide tailored solutions, whether you're buying or selling, allowing you to move with confidence.



ALEX NEIL

ESTATE AGENTS SINCE 1984

www.alexneil.com