



FLORIN COURT SE1
1 bedroom duplex apartment

£600,000
SOLD

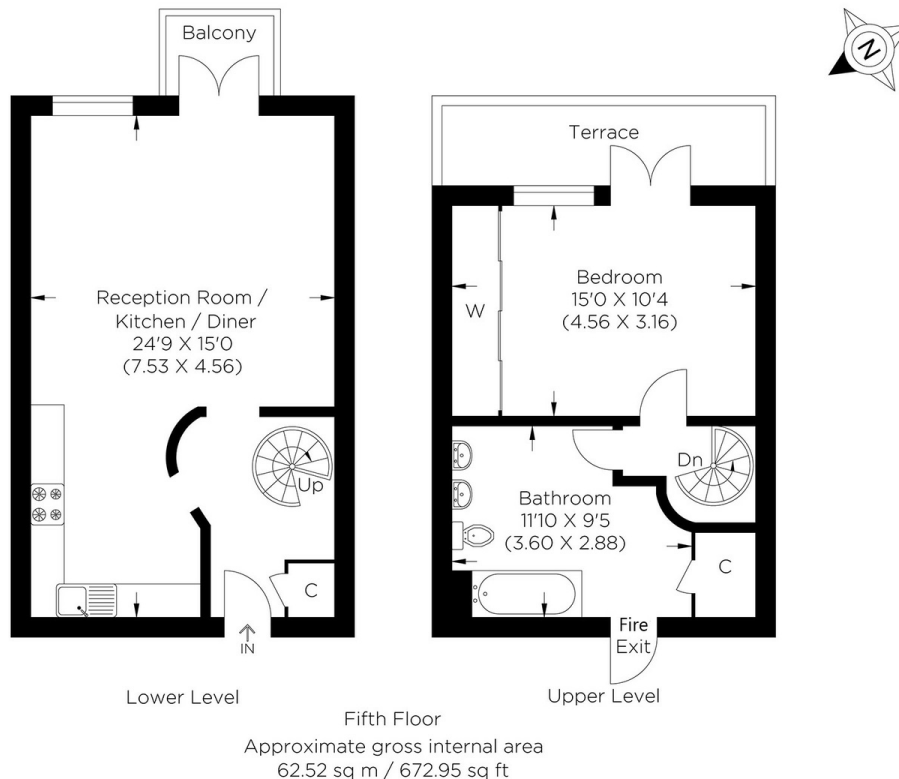


FLORIN COURT SE1

Set within effortless reach of Maltby Street Market, Shad Thames and the Tower of London, this spectacular one-bedroom duplex apartment is in Florin Court, Tanner Street, Bermondsey SE1. This property is beautifully appointed and finished to an exceptionally high standard throughout. The property occupies the fifth and sixth floors of this sought-after development. It offers a spacious open-plan kitchen-lounge with wooden floors and floor-to-ceiling windows opening to a large private balcony, a large double bedroom with built-in wardrobes and access to a large terrace and a spacious three-piece bathroom. Furthermore, boasting a secure car parking space, lift access and daytime porterage. Florin Court's perfect location is very accessible to the large variety of bars, restaurants and shops the area offers. London Bridge and Bermondsey stations are also both within proximity. We highly recommend organising your appointment to view this home.

Borough: Southwark* Council Tax: D* EPC: C Lease Term: 975 years* Service Charge: £2,930* Ground Rent: £125*

Nearest Station: London Bridge (0.51 miles) Material Information: www.alexneil.com/material-information



Rotherhithe & Bermondsey Office
146 Lower Road, London SE16 2UG

t: 020 7237 6767 e: rotherhithe@alexneil.com

Disclaimer: Property descriptions are subjective and used in good faith as an opinion rather than statements of fact. The owner provided information relating to title, tenure, service charges and ground rent information. Therefore, please make specific enquiries to ensure that our descriptions match your expectations of the property. Floor plan measurements are approximate and for illustrative purposes only. Furthermore, we have not tested any services, systems or appliances at this property. And we strongly recommend that you verify all the provided information on inspection and that your surveyor and conveyancer further confirm details. Also, market conditions and property values regularly fluctuate. And showcased sold properties demonstrate our previous successes rather than indicate live property values. *As advised by the owner. **Property sold subject to contract.

ALEX NEIL

ESTATE AGENTS SINCE 1984

2024 signifies our **40th Anniversary**, and we are immensely proud to have reached this impressive longevity milestone. In celebration, we launched an **exceptional promotion** for sellers, affording them increased marketing exposure for free!

40 years of expertise: With four decades of experience, we bring a wealth of knowledge and expertise. Our durability is a testament to the trust satisfied clients place in us. We understand the nuances of the diverse neighbourhoods we cover. Our local expertise allows us to provide tailored solutions, whether you're buying or selling, allowing you to move with confidence.



ALEX NEIL

ESTATE AGENTS SINCE 1984

www.alexneil.com