



BEACON HOUSE E14  
**2 bedroom apartment**

**£450,000**  
SOLD STC\*\*

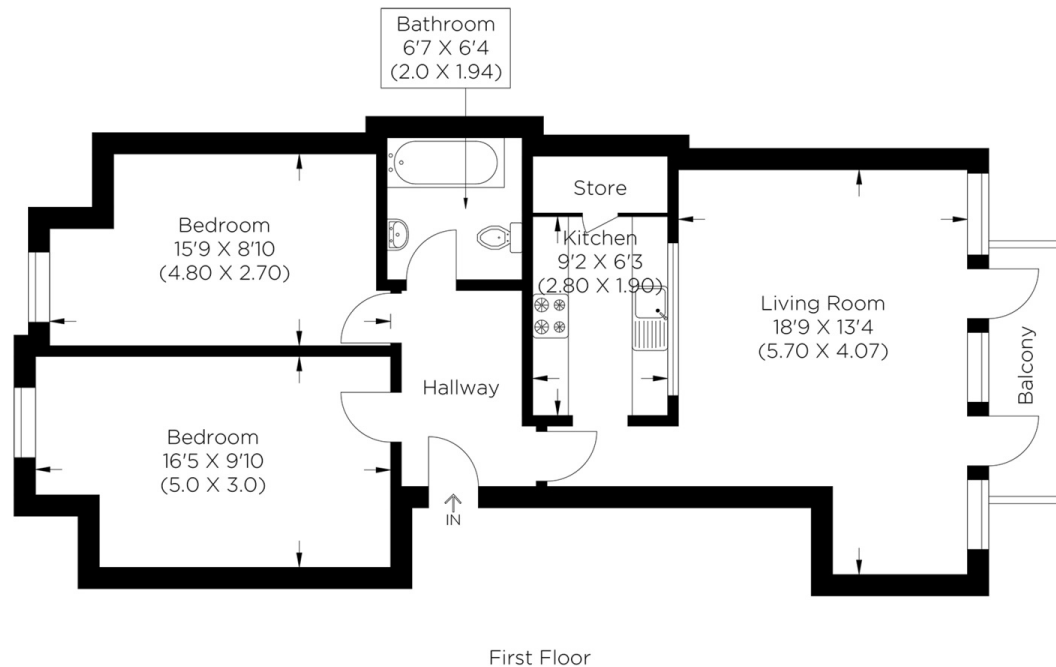




# BEACON HOUSE E14

This spacious two-double-bedroom, one-bathroom apartment is in the historic Beacon House in Burrell's Wharf Square, Isle of Dogs E14. The accommodation features an open plan living space and kitchen leading onto a balcony, perfect for late summer evenings overlooking this fantastic development. Both double bedrooms have abundant floor space and light throughout. Furthermore, there is a three-piece family bathroom. Burrells Wharf residents enjoy bundles of amenities within the estate, including a leisure centre with a gym, a swimming pool, a jacuzzi and sauna, 24-Hour concierge service, secure allocated parking, communal BBQ area within the square and an amazing community. Also included in the service charge is the ever-desirable gas central heating, which runs from the communal boiler for the estate.

Borough: Tower Hamlets\* Council Tax: E\* EPC: C Lease Term: 90 years\* Service Charge: £6,000\* Ground Rent: £5\*  
Nearest Station: Mudchute (0.32 miles) Material Information: [www.alexneil.com/material-information](http://www.alexneil.com/material-information)



First Floor  
Approximate gross internal area  
66.47 sq m / 715.47 sq ft

**Canary Wharf & Docklands Office**  
**2 Westferry Road, Canary Wharf, London E14 8JT**

t: 020 7537 9859 e: [canarywharf@alexneil.com](mailto:canarywharf@alexneil.com)

Disclaimer: Property descriptions are subjective and used in good faith as an opinion rather than statements of fact. The owner provided information relating to title, tenure, service charges and ground rent information. Therefore, please make specific enquiries to ensure that our descriptions match your expectations of the property. Floor plan measurements are approximate and for illustrative purposes only. Furthermore, we have not tested any services, systems or appliances at this property. And we strongly recommend that you verify all the provided information on inspection and that your surveyor and conveyancer further confirm details. Also, market conditions and property values regularly fluctuate. And showcased sold properties demonstrate our previous successes rather than indicate live property values. \*As advised by the owner. \*\*Property sold subject to contract.



## ALEX NEIL

ESTATE AGENTS SINCE 1984

2024 signifies our **40th Anniversary**, and we are immensely proud to have reached this impressive longevity milestone. In celebration, we launched an **exceptional promotion** for sellers, affording them increased marketing exposure for free!

**40 years of expertise:** With four decades of experience, we bring a wealth of knowledge and expertise. Our durability is a testament to the trust satisfied clients place in us. We understand the nuances of the diverse neighbourhoods we cover. Our local expertise allows us to provide tailored solutions, whether you're buying or selling, allowing you to move with confidence.



ALEX NEIL

ESTATE AGENTS SINCE 1984

[www.alexneil.com](http://www.alexneil.com)