



PERRY COURT E14
2 bedroom apartment

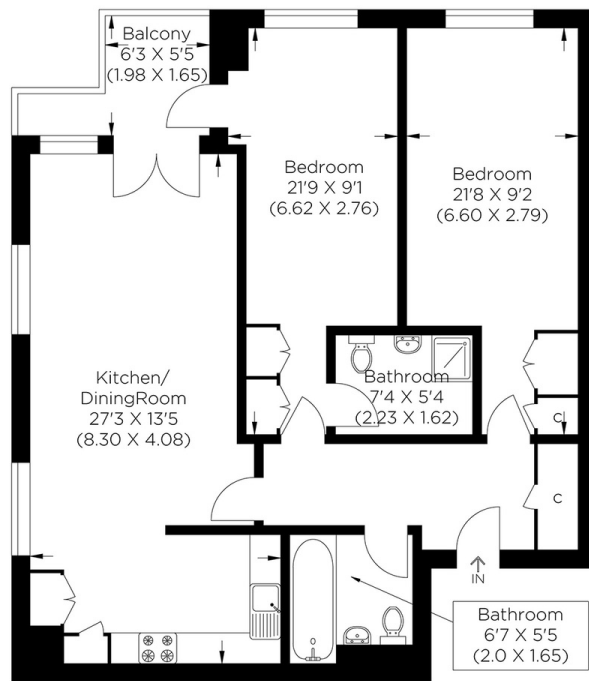
£475,000
SOLD STC**



PERRY COURT E14

This spacious third floor apartment within this popular riverside development, Perry Court, Maritime Quay, Isle of Dogs E14, offers superb views. With all principal rooms overlooking the river, every room in this bright southwest-facing apartment receives a fantastic amount of light. The spacious living room benefits from full-height glazed balcony doors opening onto a private river-facing balcony. The contemporary-styled kitchen was fitted a couple of years ago and offers plenty of storage and worktop space with various integrated kitchen appliances. The main bedroom has far-reaching views across the river and has a good amount of fitted wardrobe space, access to the balcony and a three-piece shower room en-suite. Bedroom two is a good-sized double room with direct river views and plenty of fitted wardrobe space. A modern three-piece bathroom suite is off the hallway, where there is also a useful storage cupboard.

Borough: Tower Hamlets* Council Tax: E* EPC: B Lease Term: 100 years* Service Charge: £3,250* Ground Rent: £590*
Nearest Station: Mudchute (0.37 miles) Material Information: www.alexneil.com/material-information



Third Floor

Approximate gross internal area
80.76 sq m / 869.29 sq ft



Canary Wharf & Docklands Office
2 Westferry Road, Canary Wharf, London E14 8JT

t: 020 7537 9859 e: canarywharf@alexneil.com

Disclaimer: Property descriptions are subjective and used in good faith as an opinion rather than statements of fact. The owner provided information relating to title, tenure, service charges and ground rent information. Therefore, please make specific enquiries to ensure that our descriptions match your expectations of the property. Floor plan measurements are approximate and for illustrative purposes only. Furthermore, we have not tested any services, systems or appliances at this property. And we strongly recommend that you verify all the provided information on inspection and that your surveyor and conveyancer further confirm details. Also, market conditions and property values regularly fluctuate. And showcased sold properties demonstrate our previous successes rather than indicate live property values. *As advised by the owner. **Property sold subject to contract.

ALEX NEIL

ESTATE AGENTS SINCE 1984

2024 signifies our **40th Anniversary**, and we are immensely proud to have reached this impressive longevity milestone. In celebration, we launched an **exceptional promotion** for sellers, affording them increased marketing exposure for free!

40 years of expertise: With four decades of experience, we bring a wealth of knowledge and expertise. Our durability is a testament to the trust satisfied clients place in us. We understand the nuances of the diverse neighbourhoods we cover. Our local expertise allows us to provide tailored solutions, whether you're buying or selling, allowing you to move with confidence.



ALEX NEIL

ESTATE AGENTS SINCE 1984

www.alexneil.com