



BRAY DRIVE E16
4 bedroom terraced house

£600,000
SOLD

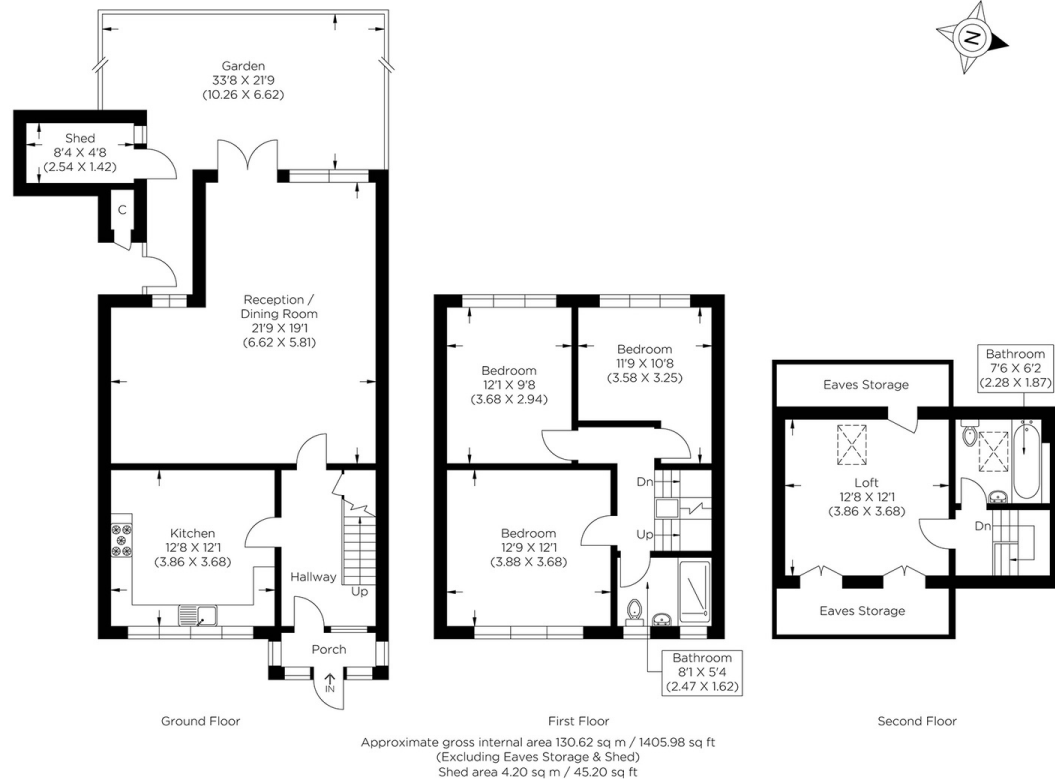


BRAY DRIVE E16

This stunning three-storey, four-bedroom house is in the ever-quiet Bray Drive, Canning Town, E16. The house is beautifully decorated and comprises a large modern kitchen with a massive lounge to the rear leading to a large, beautifully maintained garden. Four spacious double bedrooms and two bathrooms on the second and third floors are all decorated to a high standard. The house benefits from a large amount of storage and is being sold chain free. The location is a cul de sac turning, which offers ample allocated residence parking and is just a short walk around the corner from Royal Victoria DLR Station. Custom House DLR Station is an additional few minutes walk away. Schools and leisure facilities within this area are fantastic, including the Excel Exhibition Centre and a wide range of restaurants, bars and other facilities within Western Gateway.

Borough: Newham* Council Tax: D* EPC: D

Nearest Station: Royal Victoria (0.14 miles) Material Information: www.alexneil.com/material-information



Canary Wharf & Docklands Office
2 Westferry Road, Canary Wharf, London E14 8JT

t: 020 7537 9859 e: canarywharf@alexneil.com

Disclaimer: Property descriptions are subjective and used in good faith as an opinion rather than statements of fact. The owner provided information relating to title, tenure, service charges and ground rent information. Therefore, please make specific enquiries to ensure that our descriptions match your expectations of the property. Floor plan measurements are approximate and for illustrative purposes only. Furthermore, we have not tested any services, systems or appliances at this property. And we strongly recommend that you verify all the provided information on inspection and that your surveyor and conveyancer further confirm details. Also, market conditions and property values regularly fluctuate. And showcased sold properties demonstrate our previous successes rather than indicate live property values. *As advised by the owner. **Property sold subject to contract.

ALEX NEIL

ESTATE AGENTS SINCE 1984

2024 signifies our **40th Anniversary**, and we are immensely proud to have reached this impressive longevity milestone. In celebration, we launched an **exceptional promotion** for sellers, affording them increased marketing exposure for free!

40 years of expertise: With four decades of experience, we bring a wealth of knowledge and expertise. Our durability is a testament to the trust satisfied clients place in us. We understand the nuances of the diverse neighbourhoods we cover. Our local expertise allows us to provide tailored solutions, whether you're buying or selling, allowing you to move with confidence.



ALEX NEIL

ESTATE AGENTS SINCE 1984

www.alexneil.com