



COPENHAGEN COURT SE8  
**studio apartment**

**£350,000**  
SOLD

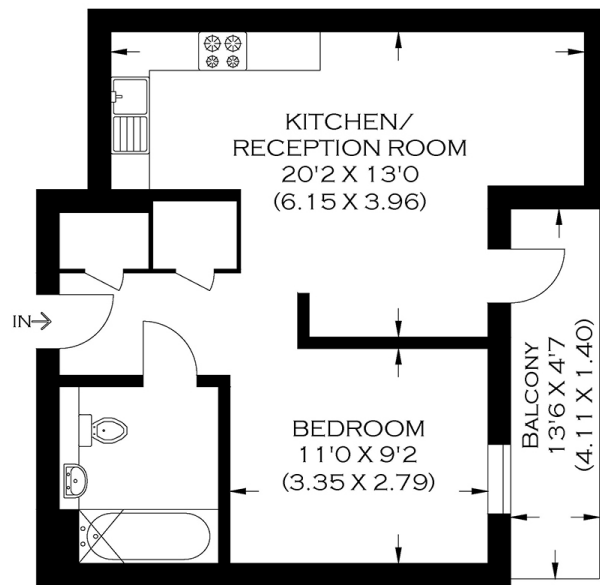




# COPENHAGEN COURT SE8

This contemporary studio apartment is in Copenhagen Court, Yeoman Street, Deptford SE8, part of the sought-after Greenland Place Development. This bright and airy property comprises an open-plan living room with floor-to-ceiling windows, a fully fitted kitchen with integrated appliances, a bedroom and a modern bathroom suite. Copenhagen Court also benefits from a concierge service and a residents' gym. The apartment is a short walk from Canada Water Tube Station (Jubilee Line) and Surrey Quays Overground Station. The Thames Clipper is nearby and is an alternative way to get to Canary Wharf or The City. Sure to attract much interest, we recommend booking your appointment to view this apartment.

Borough: Lewisham\* Council Tax: B\* EPC: B Lease Term: 992 years\* Service Charge: £2,290\* Ground Rent: £400\*  
Nearest Station: Deptford (0.13 miles) Material Information: [www.alexneil.com/material-information](http://www.alexneil.com/material-information)



FIRST FLOOR

APPROXIMATE GROSS INTERNAL AREA  
39.2 SQ M / 422.0 SQ FT

**Rotherhithe & Bermondsey Office**  
146 Lower Road, London SE16 2UG

t: 020 7237 6767 e: [rotherhithe@alexneil.com](mailto:rotherhithe@alexneil.com)

Disclaimer: Property descriptions are subjective and used in good faith as an opinion rather than statements of fact. The owner provided information relating to title, tenure, service charges and ground rent information. Therefore, please make specific enquiries to ensure that our descriptions match your expectations of the property. Floor plan measurements are approximate and for illustrative purposes only. Furthermore, we have not tested any services, systems or appliances at this property. And we strongly recommend that you verify all the provided information on inspection and that your surveyor and conveyancer further confirm details. Also, market conditions and property values regularly fluctuate. And showcased sold properties demonstrate our previous successes rather than indicate live property values. \*As advised by the owner. \*\*Property sold subject to contract.



# ALEX NEIL

ESTATE AGENTS SINCE 1984

2024 signifies our **40th Anniversary**, and we are immensely proud to have reached this impressive longevity milestone. In celebration, we launched an **exceptional promotion** for sellers, affording them increased marketing exposure for free!

**40 years of expertise:** With four decades of experience, we bring a wealth of knowledge and expertise. Our durability is a testament to the trust satisfied clients place in us. We understand the nuances of the diverse neighbourhoods we cover. Our local expertise allows us to provide tailored solutions, whether you're buying or selling, allowing you to move with confidence.



ALEX NEIL

ESTATE AGENTS SINCE 1984

[www.alexneil.com](http://www.alexneil.com)