



MENAI PLACE E3  
**1 bedroom apartment**

**£375,000**  
SOLD

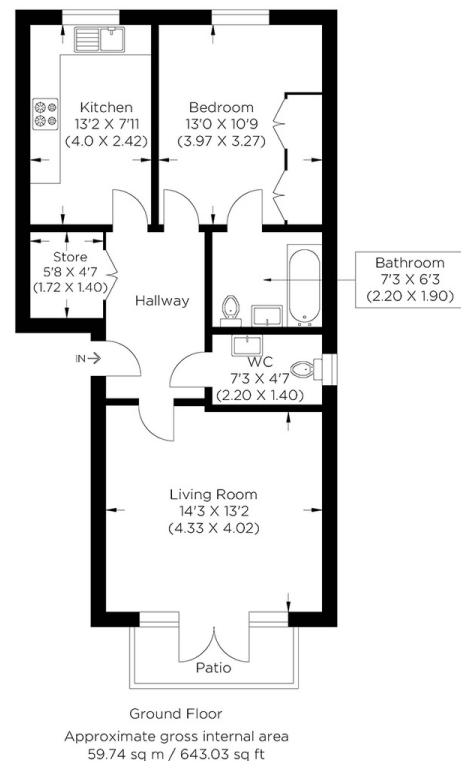




# MENAI PLACE E3

Alex Neil presents a generously sized apartment with great outside space in a secure gated development in Menai Place, Bow E3. The property's perfect layout maximises the space and the private patio area. With a vast living room with French doors opening onto the patio, you can enjoy the summer months with the doors open and with the gated community, you know that the general public cannot walk past, giving excellent privacy. The rest of the property follows the pattern, offers a wealth of space, and comprises a separate modern kitchen, great for those who like to shut away the messy pots and pans whilst hosting dinner parties! The hallway is a great storage area, and the bedroom is a significant double room with an en-suite. There is a separate toilet and basin for guests to use. Ideally located, you are within walking distance to a range of local amenities such as Victoria Park, Roman Road Market plus Bow Road and Mile End Underground.

Borough: Tower Hamlets\* Council Tax: C\* EPC: C Lease Term: 104 years\* Service Charge: £2,085\* Ground Rent: £150\*  
Nearest Station: Bow Church (0.34 miles) Material Information: [www.alexneil.com/material-information](http://www.alexneil.com/material-information)



**Canary Wharf & Docklands Office**  
2 Westferry Road, Canary Wharf, London E14 8JT

t: 020 7537 9859 e: [canarywharf@alexneil.com](mailto:canarywharf@alexneil.com)

Disclaimer: Property descriptions are subjective and used in good faith as an opinion rather than statements of fact. The owner provided information relating to title, tenure, service charges and ground rent information. Therefore, please make specific enquiries to ensure that our descriptions match your expectations of the property. Floor plan measurements are approximate and for illustrative purposes only. Furthermore, we have not tested any services, systems or appliances at this property. And we strongly recommend that you verify all the provided information on inspection and that your surveyor and conveyancer further confirm details. Also, market conditions and property values regularly fluctuate. And showcased sold properties demonstrate our previous successes rather than indicate live property values. \*As advised by the owner. \*\*Property sold subject to contract.

# ALEX NEIL

ESTATE AGENTS SINCE 1984