



CHART HOUSE E14
2 bedroom apartment

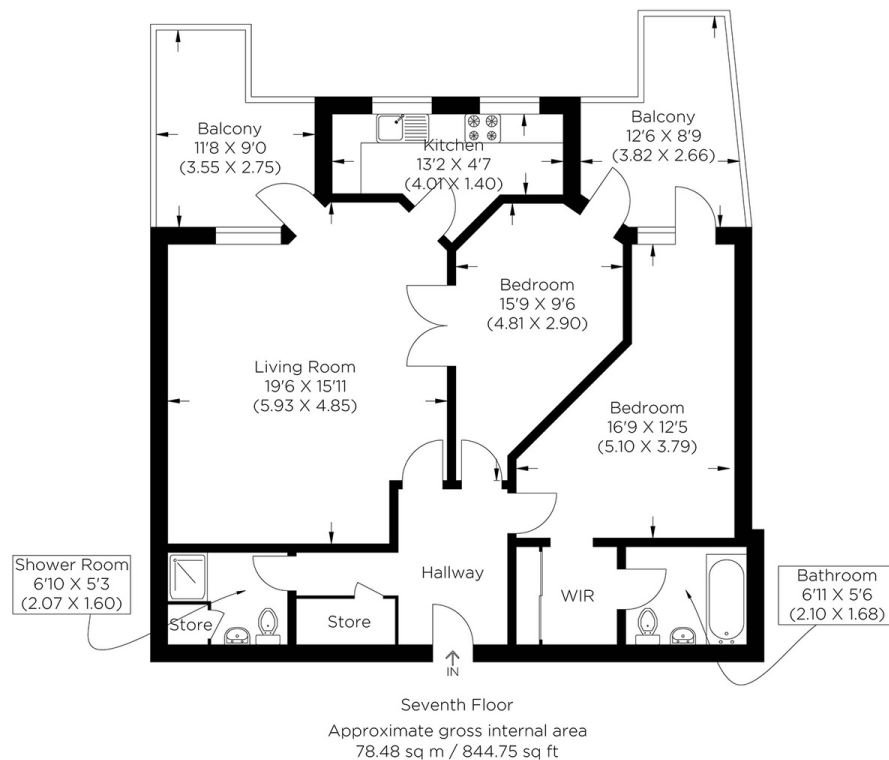
£575,000
SOLD



CHART HOUSE E14

This immaculate two-bedroom sub penthouse apartment is in the desirable Chart House, Burrells Wharf Square, Isle of Dogs E14. The apartment benefits from two large balconies overlooking the River Thames with stunning city views! Located in the sought-after riverside Burrells Wharf development, this modern two-double-bedroom apartment offers magnificent views across the river, consisting of a dual-aspect living/dining room, two double bedrooms with the master having built-in wardrobes and an en suite bathroom, all with direct views of the river and access a large balcony. There is a separate kitchen with views over the river. Burrells Wharf offers superb facilities, including a swimming pool, gym, spa and concierge service. Set perfectly for Mudchute DLR and Mast House Terrace Pier for the Thames Clipper, providing access to Canary Wharf, the O2 and Greenwich. Please note the heating is included within the service charge and the apartment is sold chain free.

Borough: Tower Hamlets* Council Tax: F* EPC: C Lease Term: 999 years* Service Charge: £7,497* Ground Rent: £10*
Nearest Station: Mudchute (0.35 miles) Material Information: www.alexneil.com/material-information



Canary Wharf & Docklands Office
2 Westferry Road, Canary Wharf, London E14 8JT

t: 020 7537 9859 e: canarywharf@alexneil.com

Disclaimer: Property descriptions are subjective and used in good faith as an opinion rather than statements of fact. The owner provided information relating to title, tenure, service charges and ground rent information. Therefore, please make specific enquiries to ensure that our descriptions match your expectations of the property. Floor plan measurements are approximate and for illustrative purposes only. Furthermore, we have not tested any services, systems or appliances at this property. And we strongly recommend that you verify all the provided information on inspection and that your surveyor and conveyancer further confirm details. Also, market conditions and property values regularly fluctuate. And showcased sold properties demonstrate our previous successes rather than indicate live property values. *As advised by the owner. **Property sold subject to contract.



ALEX NEIL

ESTATE AGENTS SINCE 1984

2024 signifies our **40th Anniversary**, and we are immensely proud to have reached this impressive longevity milestone. In celebration, we launched an **exceptional promotion** for sellers, affording them increased marketing exposure for free!

40 years of expertise: With four decades of experience, we bring a wealth of knowledge and expertise. Our durability is a testament to the trust satisfied clients place in us. We understand the nuances of the diverse neighbourhoods we cover. Our local expertise allows us to provide tailored solutions, whether you're buying or selling, allowing you to move with confidence.



ALEX NEIL

ESTATE AGENTS SINCE 1984

www.alexneil.com