



LANTERNA COURT E3
2 bedroom apartment

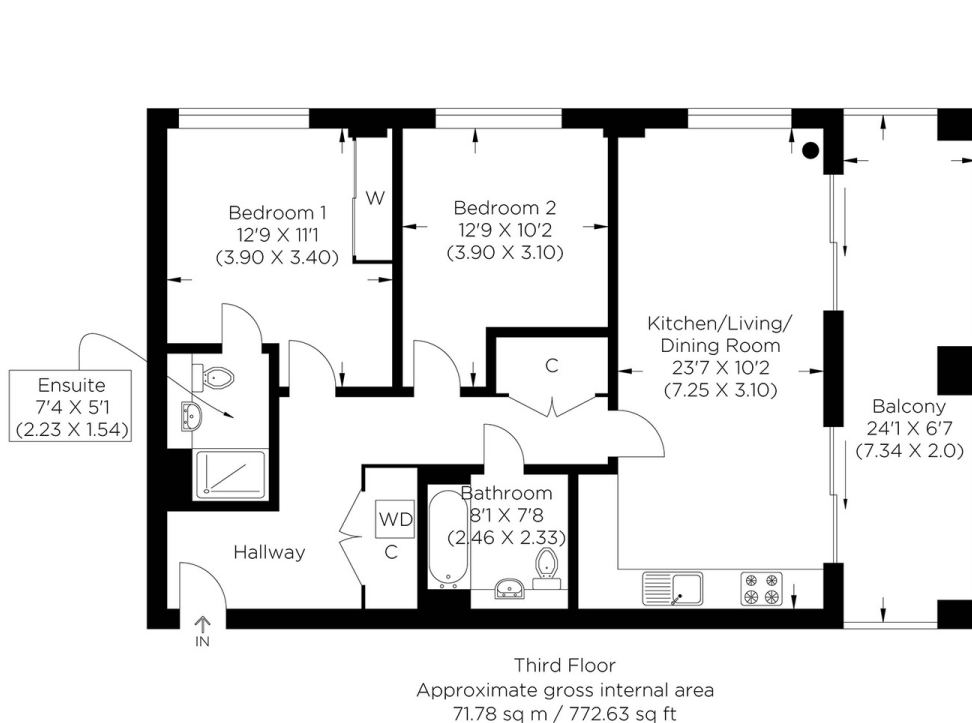
£650,000
SOLD



LANTERNA COURT E3

This exceptional two double-bedroom apartment with spectacular canal views is in Lanterna Court, Wyke Road, Fish Island Village, Bow E3. The apartment's intelligent layout enables the living areas and balcony to maximise the canal aspect with floor-to-ceiling windows, allowing plenty of natural light. The accommodation comprises a spacious open plan-style kitchen/living/dining room currently hosting a large dining table and various living room items. You also have two double bedrooms with en-suite to master, a family bathroom and two essential double storage cupboards in the hallway. Everpopular Fish Island Village is perfect for those looking to live in a thriving community. Locally you have an abundance of chic coffee shops, bars and restaurants with Hackney Wick Station just a short walk. Stratford is slightly further afield with Westfield shopping centre and Stratford International giving quick and easy access across the city.

Borough: Tower Hamlets* Council Tax: D* EPC: B Lease Term: 245 years* Service Charge: £3,242* Ground Rent: £350*
Nearest Station: Hackney Wick (0.2 miles) Material Information: www.alexneil.com/material-information



Canary Wharf & Docklands Office
2 Westferry Road, Canary Wharf, London E14 8JT

t: 020 7537 9859 e: canarywharf@alexneil.com

Disclaimer: Property descriptions are subjective and used in good faith as an opinion rather than statements of fact. The owner provided information relating to title, tenure, service charges and ground rent information. Therefore, please make specific enquiries to ensure that our descriptions match your expectations of the property. Floor plan measurements are approximate and for illustrative purposes only. Furthermore, we have not tested any services, systems or appliances at this property. And we strongly recommend that you verify all the provided information on inspection and that your surveyor and conveyancer further confirm details. Also, market conditions and property values regularly fluctuate. And showcased sold properties demonstrate our previous successes rather than indicate live property values. *As advised by the owner. **Property sold subject to contract.

ALEX NEIL

ESTATE AGENTS SINCE 1984

2024 signifies our **40th Anniversary**, and we are immensely proud to have reached this impressive longevity milestone. In celebration, we launched an **exceptional promotion** for sellers, affording them increased marketing exposure for free!

40 years of expertise: With four decades of experience, we bring a wealth of knowledge and expertise. Our durability is a testament to the trust satisfied clients place in us. We understand the nuances of the diverse neighbourhoods we cover. Our local expertise allows us to provide tailored solutions, whether you're buying or selling, allowing you to move with confidence.



ALEX NEIL

ESTATE AGENTS SINCE 1984

www.alexneil.com