



PLOUGH WAY SE16  
**3 bedroom terraced house**

**£625,000+**  
SOLD STC\*\*



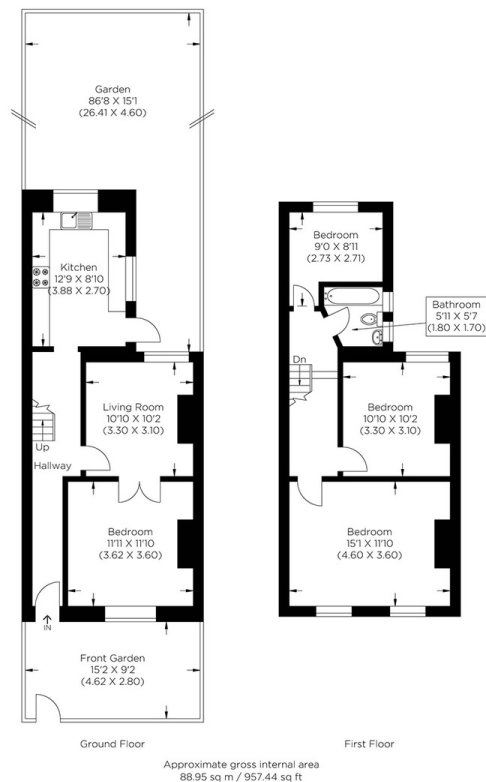


# PLOUGH WAY SE16

This well-proportioned three-bedroom house is on Plough Way, Surrey Quays, SE16. The home offers three double bedrooms in an ideal location close to excellent transport links and local amenities. The accommodation comprises two reception rooms, a modern, fully-fitted kitchen with access to a private garden and a contemporary three-piece bathroom. Further benefits include wooden flooring, central heating, double glazing and residents parking. The property's location is close to Surrey Quays Overground and Canada Water tube station offering connections to Canary Wharf, East London and the West End. In addition, Plough Way allows convenient access to Surrey Quays shopping centre, Odeon Cinema and The River Thames.

Borough: Southwark\* Council Tax: D\* EPC: D

Nearest Station: Surrey Quays (0.2 miles) Material Information: [www.alexneil.com/material-information](http://www.alexneil.com/material-information)



**Rotherhithe & Bermondsey Office**  
**146 Lower Road, London SE16 2UG**

**t: 020 7237 6767 e: [rotherhithe@alexneil.com](mailto:rotherhithe@alexneil.com)**

Disclaimer: Property descriptions are subjective and used in good faith as an opinion rather than statements of fact. The owner provided information relating to title, tenure, service charges and ground rent information. Therefore, please make specific enquiries to ensure that our descriptions match your expectations of the property. Floor plan measurements are approximate and for illustrative purposes only. Furthermore, we have not tested any services, systems or appliances at this property. And we strongly recommend that you verify all the provided information on inspection and that your surveyor and conveyancer further confirm details. Also, market conditions and property values regularly fluctuate. And showcased sold properties demonstrate our previous successes rather than indicate live property values. \*As advised by the owner. \*\*Property sold subject to contract.

# ALEX NEIL

ESTATE AGENTS SINCE 1984

2024 signifies our **40th Anniversary**, and we are immensely proud to have reached this impressive longevity milestone. In celebration, we launched an **exceptional promotion** for sellers, affording them increased marketing exposure for free!

**40 years of expertise:** With four decades of experience, we bring a wealth of knowledge and expertise. Our durability is a testament to the trust satisfied clients place in us. We understand the nuances of the diverse neighbourhoods we cover. Our local expertise allows us to provide tailored solutions, whether you're buying or selling, allowing you to move with confidence.



ALEX NEIL

ESTATE AGENTS SINCE 1984

[www.alexneil.com](http://www.alexneil.com)