



CHART HOUSE E14
1 bedroom apartment

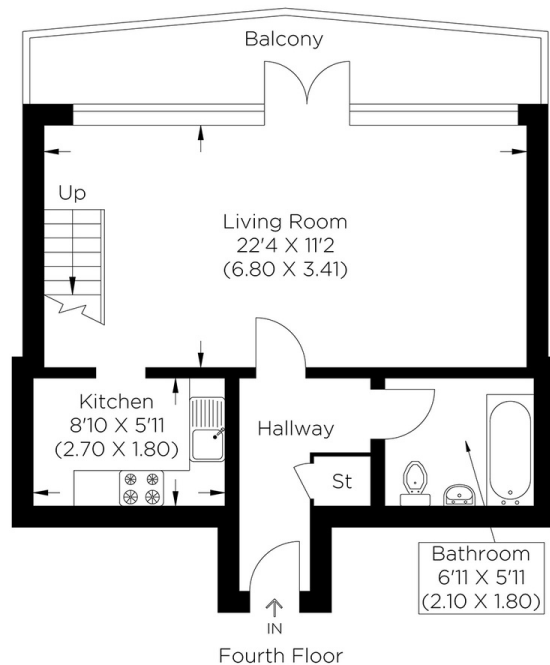
£425,000
SOLD



CHART HOUSE E14

Rare to the market, we offer this unique duplex apartment with direct river views in the popular Chart House, Burrells Wharf Square, Isle of Dogs E14. The apartment features a brand-new refurbished kitchen, a great-sized living space with double-height ceilings and floor-to-ceiling windows boasting magnificent views across the River Thames. The upstairs bedroom is spacious in size, with abundant light, and lastly, the bathroom has been beautifully designed and refurbished. The Chart House is in the ever-popular Burrells Wharf development that offers concierge services and leisure facilities, including a gym, jacuzzi and swimming pool. Burrells Wharf is a short walk to the Greenwich Foot Tunnel, the Thames Clipper at Masthouse Terrace Pier and Mudchute DLR Station. Local bus services take you to Canary Wharf, giving access to the Jubilee Line, Elizabeth Line and an array of shops and bars. The apartment is a perfect opportunity for a first-time buyer or investor.

Borough: Tower Hamlets* Council Tax: D* EPC: D Lease Term: 90 years* Service Charge: £6,500* Ground Rent: £10*
Nearest Station: Mudchute (0.35 miles) Material Information: www.alexneil.com/material-information



Fourth Floor



Fifth Floor

Approximate gross internal area
55.78 sq m / 600.41 sq ft



Canary Wharf & Docklands Office
2 Westferry Road, Canary Wharf, London E14 8JT

t: 020 7537 9859 e: canarywharf@alexneil.com

Disclaimer: Property descriptions are subjective and used in good faith as an opinion rather than statements of fact. The owner provided information relating to title, tenure, service charges and ground rent information. Therefore, please make specific enquiries to ensure that our descriptions match your expectations of the property. Floor plan measurements are approximate and for illustrative purposes only. Furthermore, we have not tested any services, systems or appliances at this property. And we strongly recommend that you verify all the provided information on inspection and that your surveyor and conveyancer further confirm details. Also, market conditions and property values regularly fluctuate. And showcased sold properties demonstrate our previous successes rather than indicate live property values. *As advised by the owner. **Property sold subject to contract.

ALEX NEIL

ESTATE AGENTS SINCE 1984

2024 signifies our **40th Anniversary**, and we are immensely proud to have reached this impressive longevity milestone. In celebration, we launched an **exceptional promotion** for sellers, affording them increased marketing exposure for free!

40 years of expertise: With four decades of experience, we bring a wealth of knowledge and expertise. Our durability is a testament to the trust satisfied clients place in us. We understand the nuances of the diverse neighbourhoods we cover. Our local expertise allows us to provide tailored solutions, whether you're buying or selling, allowing you to move with confidence.



ALEX NEIL

ESTATE AGENTS SINCE 1984

www.alexneil.com