



HASLERS WHARF E3
2 bedroom apartment

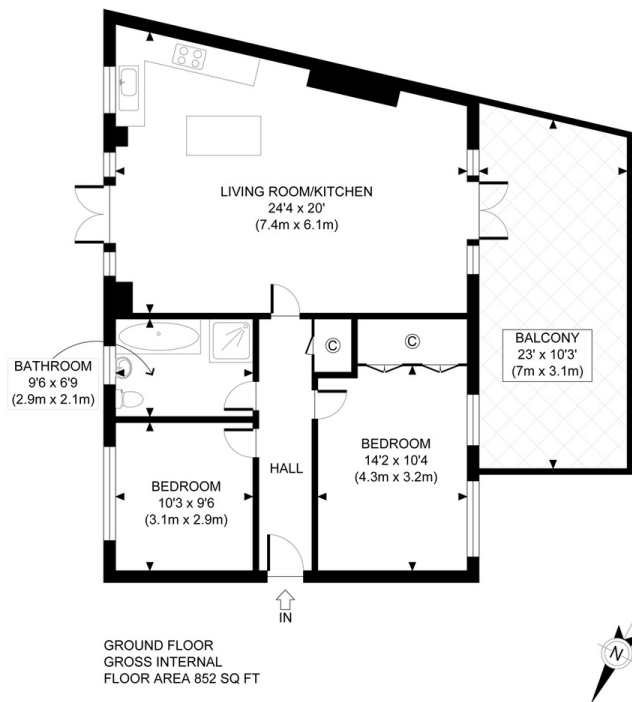
£750,000
SOLD



HASLERS WHARF E3

We present this spectacular two-bedroom apartment in Haslers Wharf, Old Ford Road, E3. There is an outside terrace directly overlooking Hertford Union Canal and Victoria Park. The interior of the home matches the remarkable outlook. This property is presented in excellent condition, with a recently updated kitchen and bathrooms, and is not one to miss. The accommodation comprises a large, open-plan kitchen/living/dining area with access to the outside terrace. You also have two generous bedrooms and a fabulous bathroom offering a shower and a bath. Located in one of East London's most sought-after locations, you are just a few minutes from Victoria Park, one of London's largest and most historic parks. The park offers beautiful walks, various cafes and eateries, festivals and events, and a weekly farmers market every Sunday for fresh and seasonal produce. In addition, you are within walking distance of Mile End Tube Station for transport links, giving easy access across the city.

Borough: Tower Hamlets* Council Tax: E* EPC: TBA Lease Term: 97 years* Service Charge: £840* Ground Rent: TBA
Nearest Station: Mile End (0.66 miles) Material Information: www.alexneil.com/material-information



APPROX. GROSS INTERNAL FLOOR AREA 852 SQ FT / 79 SQM

Canary Wharf & Docklands Office
2 Westferry Road, Canary Wharf, London E14 8JT

t: 020 7537 9859 e: canarywharf@alexneil.com

Disclaimer: Property descriptions are subjective and used in good faith as an opinion rather than statements of fact. The owner provided information relating to title, tenure, service charges and ground rent information. Therefore, please make specific enquiries to ensure that our descriptions match your expectations of the property. Floor plan measurements are approximate and for illustrative purposes only. Furthermore, we have not tested any services, systems or appliances at this property. And we strongly recommend that you verify all the provided information on inspection and that your surveyor and conveyancer further confirm details. Also, market conditions and property values regularly fluctuate. And showcased sold properties demonstrate our previous successes rather than indicate live property values. *As advised by the owner. **Property sold subject to contract.



ALEX NEIL

ESTATE AGENTS SINCE 1984