



ST. DAVIDS SQUARE E14
1 bedroom apartment

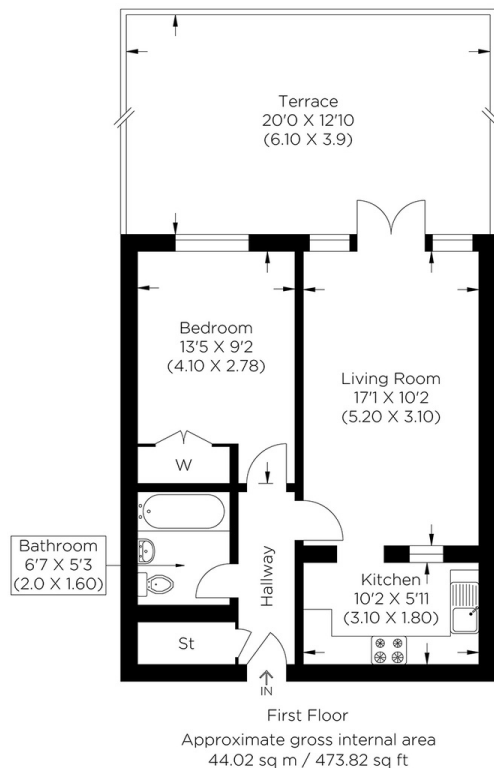
£360,000
SOLD



ST. DAVIDS SQUARE E14

Set within the highly desirable riverside development of Lockes Wharf St Davids Square, Isle of Dogs E14 is this beautifully presented one-bedroom apartment. Boasting a fantastic location, the amenities of Manchester Road offer the utmost convenience, as does the easy access to Island Gardens DLR station and the Greenwich Foot tunnel. The property boasts an open-plan kitchen/reception room with floor-to-ceiling windows, a spacious double bedroom and a family bathroom. This flat also uniquely benefits from a substantial terrace you access from the living room. It further features an allocated secure underground parking space. Lockes Wharf St Davids Square also enjoys excellent facilities, with 24-hour concierge services and a superb swimming pool and gymnasium.

Borough: Tower Hamlets* Council Tax: D* EPC: C Lease Term: 974* Service Charge: £3,110* Ground Rent: £300*



Canary Wharf & Docklands Office
2 Westferry Road, Canary Wharf, London E14 8JT

t: 020 7537 9859 e: canarywharf@alexneil.com

Disclaimer: Property descriptions are subjective and used in good faith as an opinion rather than statements of fact. The owner provided information relating to title, tenure, service charges and ground rent information. Therefore, please make specific enquiries to ensure that our descriptions match your expectations of the property. Floor plan measurements are approximate and for illustrative purposes only. Furthermore, we have not tested any services, systems or appliances at this property. And we strongly recommend that you verify all the provided information on inspection and that your surveyor and conveyancer further confirm details. Also, market conditions and property values regularly fluctuate. And showcased sold properties demonstrate our previous successes rather than indicate live property values. *As advised by the owner. **Property sold subject to contract.



ALEX NEIL

ESTATE AGENTS SINCE 1984