



FISHER CLOSE SE16
2 bedroom apartment

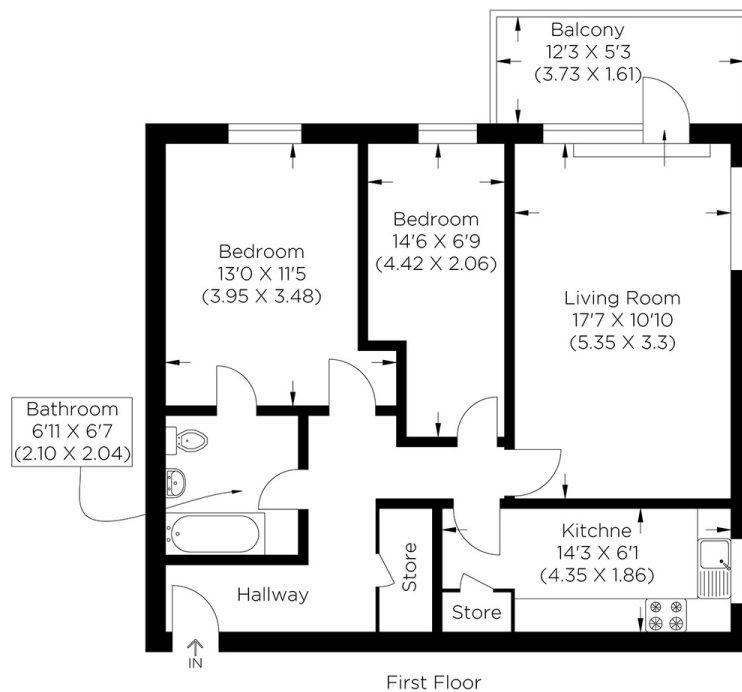
£490,000
SOLD



FISHER CLOSE SE16

Beautifully presented two bedroom apartment located in Fisher close, Rotherhithe, SE16. Set in a fantastic location a short distance to Canada water underground station and Rotherhithe overground station this superb two bedroom, one bathroom apartment comprise's; hallway with entry phone system, master double bedroom with built in cupboard and access to 'Jack and Jill' bathroom, second double bedroom with floor to ceiling windows, bright and spacious living room with stylish open plan kitchen with integrated appliances and access to a large private balcony overlooking the park.

Borough: Southwark* Council Tax: E* EPC: B Lease Term: 243 years* Service Charge: £2,534* Ground Rent: £300*
Nearest Station: Rotherhithe (0.49 miles) Material Information: www.alexneil.com/material-information



First Floor

Approximate gross internal area
62.71 sq m / 675.0 sq ft

Rotherhithe & Bermondsey Office
146 Lower Road, London SE16 2UG

t: 020 7237 6767 e: rotherhithe@alexneil.com

Disclaimer: Property descriptions are subjective and used in good faith as an opinion rather than statements of fact. The owner provided information relating to title, tenure, service charges and ground rent information. Therefore, please make specific enquiries to ensure that our descriptions match your expectations of the property. Floor plan measurements are approximate and for illustrative purposes only. Furthermore, we have not tested any services, systems or appliances at this property. And we strongly recommend that you verify all the provided information on inspection and that your surveyor and conveyancer further confirm details. Also, market conditions and property values regularly fluctuate. And showcased sold properties demonstrate our previous successes rather than indicate live property values. *As advised by the owner. **Property sold subject to contract.



ALEX NEIL

ESTATE AGENTS SINCE 1984