



ALLOY COURT E3
2 bedroom apartment

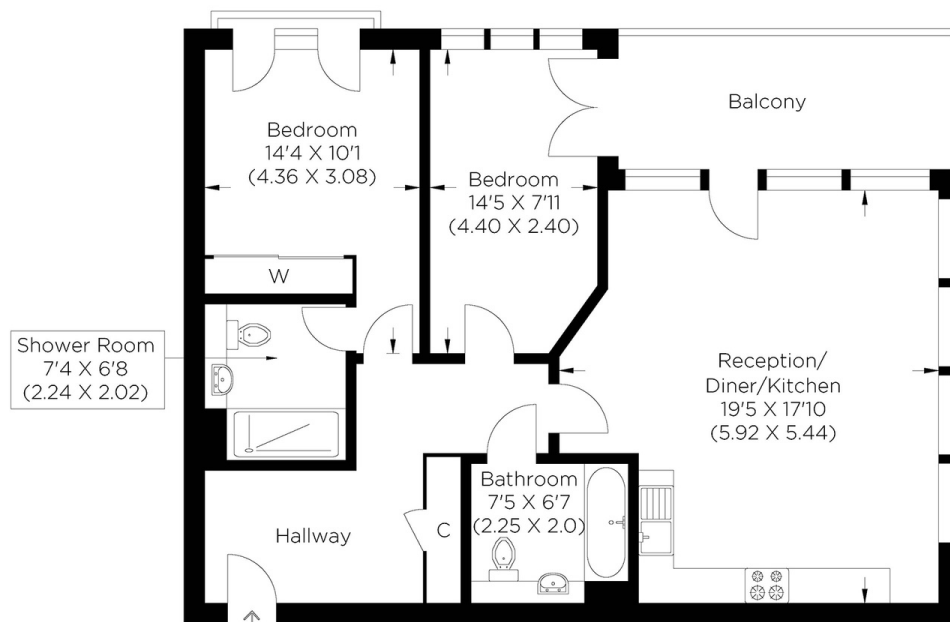
£625,000
SOLD



ALLOY COURT E3

A wonderfully bright, southerly facing dual aspect apartment filled with natural light in Alloy Court, Casings Way, Fish Island, E3. The apartment is generously proportioned through-out. Witnessed as soon as you step into the hallway, you'll witness the size immediately, with the extra space perfect for shoe and coat storage or even a pram. The generosity continues through-out with two double bedrooms, with a double sized shower en-suite in the master in addition to the family bathroom. Towards the end of the hallway you have the large open plan style living - dining - kitchen area. With floor to ceiling windows around two whole walls, you'll never be short of natural light. With access to the balcony too, you can enjoy the outside space whilst unwinding from a long day. With a real sense of community and many independent shops and cafes, this property is also within walking distance of Hackney Wick Overground Station, and has easy access to Stratford and The City.

Borough: Tower Hamlets* Council Tax: D* EPC: B Lease Term: 992* Service Charge: £2,294* Ground Rent: £250*



Fourth Floor

Approximate gross internal area
73.65 sq m / 792.76 sq ft

Canary Wharf & Docklands Office
2 Westferry Road, Canary Wharf, London E14 8JT

t: 020 7537 9859 e: canarywharf@alexneil.com

Disclaimer: Property descriptions are subjective and used in good faith as an opinion rather than statements of fact. The owner provided information relating to title, tenure, service charges and ground rent information. Therefore, please make specific enquiries to ensure that our descriptions match your expectations of the property. Floor plan measurements are approximate and for illustrative purposes only. Furthermore, we have not tested any services, systems or appliances at this property. And we strongly recommend that you verify all the provided information on inspection and that your surveyor and conveyancer further confirm details. Also, market conditions and property values regularly fluctuate. And showcased sold properties demonstrate our previous successes rather than indicate live property values. *As advised by the owner. **Property sold subject to contract.



ALEX NEIL

ESTATE AGENTS SINCE 1984