



FURZE LODGE SE18  
**2 bedroom apartment**

**£400,000**  
SOLD

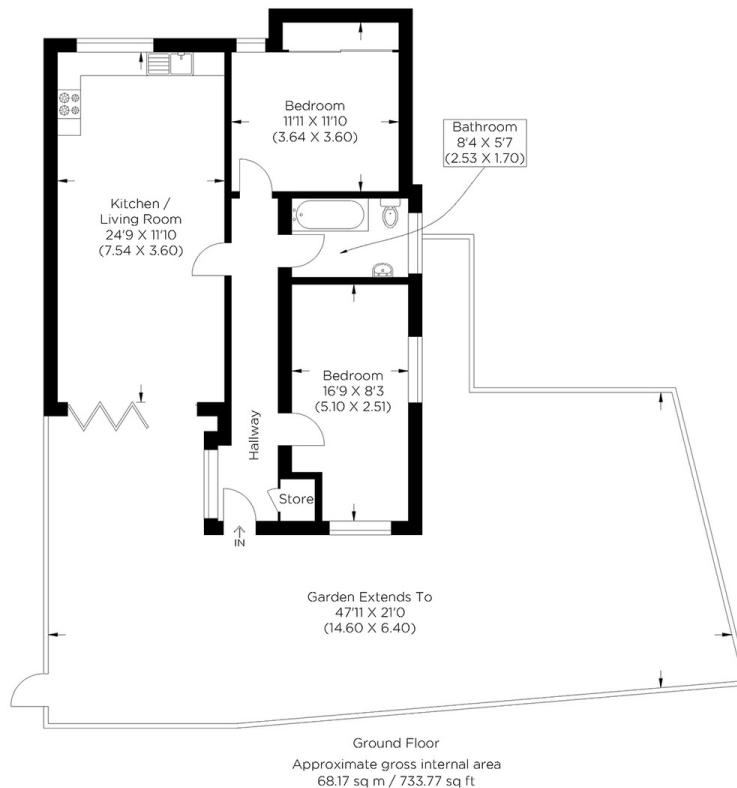




# FURZE LODGE SE18

Furze Lodge is a vibrant modern development in Plum Lane on the brow of Shooters Hill, SE18. This two-bedroom apartment has a stunning private garden with breathtaking views across London. The large open-plan kitchen/living room with high-specification finishing leads to your private green space. The beautifully presented main bedroom has plenty of storage. There is a second bedroom with plenty of floor space and a three-piece modern bathroom. Easily accessible by road (A2/A20/South Circular) and public transport, there is a range of stations, including Woolwich Arsenal, Plumstead, and Falconwood. Local bus services connect to North Greenwich for the Jubilee Line at the O2 and the New Elizabeth Line. The Royal Borough of Greenwich is famous for its expanse of open green spaces, with Shooters Hill offering a range of benefits, including the Shooters Hill Golf course, a local Tennis club, Shrewsbury Park and Oxleas Woods.

Borough: Royal Greenwich\* Council Tax: C\* EPC: C Lease Term: 115\* Service Charge: £2,025\* Ground Rent: £334\*



**Rotherhithe & Bermondsey Office**  
146 Lower Road, London SE16 2UG

t: 020 7237 6767 e: [rotherhithe@alexneil.com](mailto:rotherhithe@alexneil.com)

Disclaimer: Property descriptions are subjective and used in good faith as an opinion rather than statements of fact. The owner provided information relating to title, tenure, service charges and ground rent information. Therefore, please make specific enquiries to ensure that our descriptions match your expectations of the property. Floor plan measurements are approximate and for illustrative purposes only. Furthermore, we have not tested any services, systems or appliances at this property. And we strongly recommend that you verify all the provided information on inspection and that your surveyor and conveyancer further confirm details. Also, market conditions and property values regularly fluctuate. And showcased sold properties demonstrate our previous successes rather than indicate live property values. \*As advised by the owner. \*\*Property sold subject to contract.



# ALEX NEIL

ESTATE AGENTS SINCE 1984