



ORDELL COURT E3
2 bedroom apartment

£400,000
SOLD

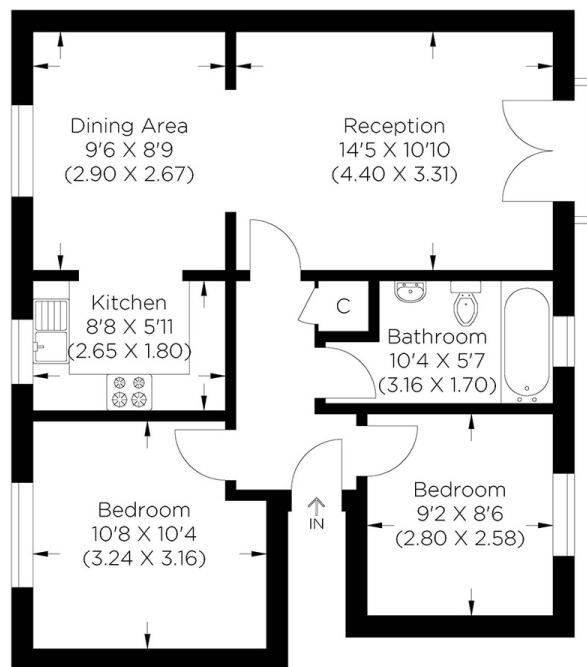


ORDELL COURT E3

This spacious, fully refurbished apartment with parking in Ordell Court, Ordell Road, E3 is ready to move into straight away. With a recently installed boiler, high quality engineered wooden floors, new carpets and a whole fresh new look, the new owners won't have to lift a finger. The accommodation benefits from a dual aspect, so has natural light through-out and comprises of a large living area complete with dining space and Juliette Balcony and a separate kitchen area. You also have the two bedrooms and modern family bathroom. Further benefits include the electronic gated parking and owning a share of the freehold. The location is superb for transport links. Just a short walk to Bow Road and Mile End Tube stations plus the Bow Church DLR allows easy access to Canary Wharf and across the city. Moreover, you are just a stone's throw away from Victoria Park, Roman Road, A12 and much more.

Borough: Tower Hamlets* Council Tax: D* EPC: C Lease Term: 95 years* Service Charge: £2,700* Ground Rent: TBA

Nearest Station: Bow Road (0.27 miles) Material Information: www.alexneil.com/material-information



Approximate gross internal area
57.60 sq m / 620.0 sq ft

Canary Wharf & Docklands Office
2 Westferry Road, Canary Wharf, London E14 8JT

t: 020 7537 9859 e: canarywharf@alexneil.com

Disclaimer: Property descriptions are subjective and used in good faith as an opinion rather than statements of fact. The owner provided information relating to title, tenure, service charges and ground rent information. Therefore, please make specific enquiries to ensure that our descriptions match your expectations of the property. Floor plan measurements are approximate and for illustrative purposes only. Furthermore, we have not tested any services, systems or appliances at this property. And we strongly recommend that you verify all the provided information on inspection and that your surveyor and conveyancer further confirm details. Also, market conditions and property values regularly fluctuate. And showcased sold properties demonstrate our previous successes rather than indicate live property values. *As advised by the owner. **Property sold subject to contract.



ALEX NEIL

ESTATE AGENTS SINCE 1984

2024 signifies our **40th Anniversary**, and we are immensely proud to have reached this impressive longevity milestone. In celebration, we launched an **exceptional promotion** for sellers, affording them increased marketing exposure for free!

40 years of expertise: With four decades of experience, we bring a wealth of knowledge and expertise. Our durability is a testament to the trust satisfied clients place in us. We understand the nuances of the diverse neighbourhoods we cover. Our local expertise allows us to provide tailored solutions, whether you're buying or selling, allowing you to move with confidence.



ALEX NEIL

ESTATE AGENTS SINCE 1984

www.alexneil.com