



WHEAT SHEAF CLOSE E14
2 bedroom apartment

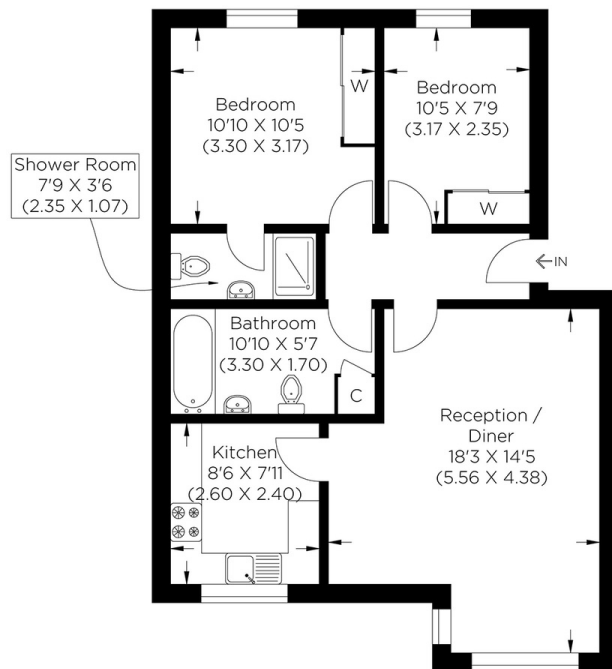
£400,000
SOLD



WHEAT SHEAF CLOSE E14

This sizeable two-bedroom, two-bathroom apartment offers stunning views of the historic Millwall Dock in the highly desirable Wheat Sheaf Close, Isle of Dogs, E14. Whilst exuding style, this wonderful home also boasts comfortable living and expansive space. Incorporating a well-proportioned reception room leading to a stylish kitchen, two double bedrooms with an en-suite bathroom to the main bedroom and a family bathroom. The Mill Quay development is within easy reach of Mudchute DLR and Asda superstore, offering the utmost convenience. Wheat Sheaf Close is a quiet, attractive development, with the lively hub of Canary Wharf being easily accessible. There is no onward chain and an allocated parking space, and we recommend your earliest viewing appointment.

Borough: Tower Hamlets* Council Tax: E* EPC: B Lease Term: 162 years* Service Charge: £2,160* Ground Rent: £250*
Nearest Station: Mudchute (0.25 miles) Material Information: www.alexneil.com/material-information



Second Floor
Approximate gross internal area
59.83 sq m / 644.0 sq ft



Canary Wharf & Docklands Office
2 Westferry Road, Canary Wharf, London E14 8JT

t: 020 7537 9859 e: canarywharf@alexneil.com

Disclaimer: Property descriptions are subjective and used in good faith as an opinion rather than statements of fact. The owner provided information relating to title, tenure, service charges and ground rent information. Therefore, please make specific enquiries to ensure that our descriptions match your expectations of the property. Floor plan measurements are approximate and for illustrative purposes only. Furthermore, we have not tested any services, systems or appliances at this property. And we strongly recommend that you verify all the provided information on inspection and that your surveyor and conveyancer further confirm details. Also, market conditions and property values regularly fluctuate. And showcased sold properties demonstrate our previous successes rather than indicate live property values. *As advised by the owner. **Property sold subject to contract.

ALEX NEIL

ESTATE AGENTS SINCE 1984