



COMPTON HOUSE SE18  
**1 bedroom apartment**

**£325,000**  
SOLD

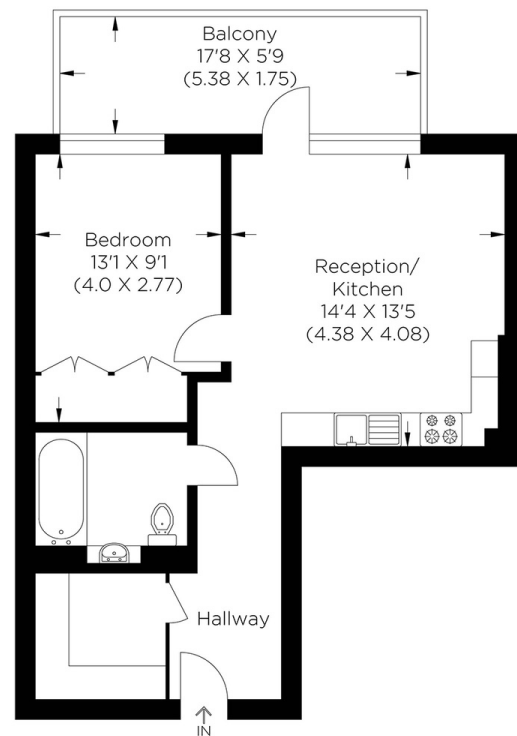




# COMPTON HOUSE SE18

A stunning one-bedroom apartment in the recently built Compton House, forming part of the prestigious Royal Arsenal Riverside, SE18 development. Boasting an open-plan reception room with a contemporary fitted kitchen, a double bedroom, a three-piece bathroom and a separate walk-in storage cupboard. This impressive apartment benefits from a spacious balcony with direct views across the Thames, landscaped communal gardens and a concierge service. Woolwich Arsenal Station is nearby, offering excellent transport links alongside various eateries and shops. Compton House offers the utmost convenience.

Borough: Royal Greenwich\* Council Tax: B\* EPC: TBA Lease Term: 993 years\* Service Charge: £2,000\* Ground Rent: £320\*  
Nearest Station: Woolwich (0.06 miles) Material Information: [www.alexneil.com/material-information](http://www.alexneil.com/material-information)



Approximate gross internal area  
43.50 sq m / 468.23 sq ft



**Canary Wharf & Docklands Office**  
**2 Westferry Road, Canary Wharf, London E14 8JT**

**t: 020 7537 9859 e: [canarywharf@alexneil.com](mailto:canarywharf@alexneil.com)**

Disclaimer: Property descriptions are subjective and used in good faith as an opinion rather than statements of fact. The owner provided information relating to title, tenure, service charges and ground rent information. Therefore, please make specific enquiries to ensure that our descriptions match your expectations of the property. Floor plan measurements are approximate and for illustrative purposes only. Furthermore, we have not tested any services, systems or appliances at this property. And we strongly recommend that you verify all the provided information on inspection and that your surveyor and conveyancer further confirm details. Also, market conditions and property values regularly fluctuate. And showcased sold properties demonstrate our previous successes rather than indicate live property values. \*As advised by the owner. \*\*Property sold subject to contract.

## ALEX NEIL

ESTATE AGENTS SINCE 1984