



COLUMBIA ROAD E2
2 bedroom duplex apartment

£650,000
SOLD

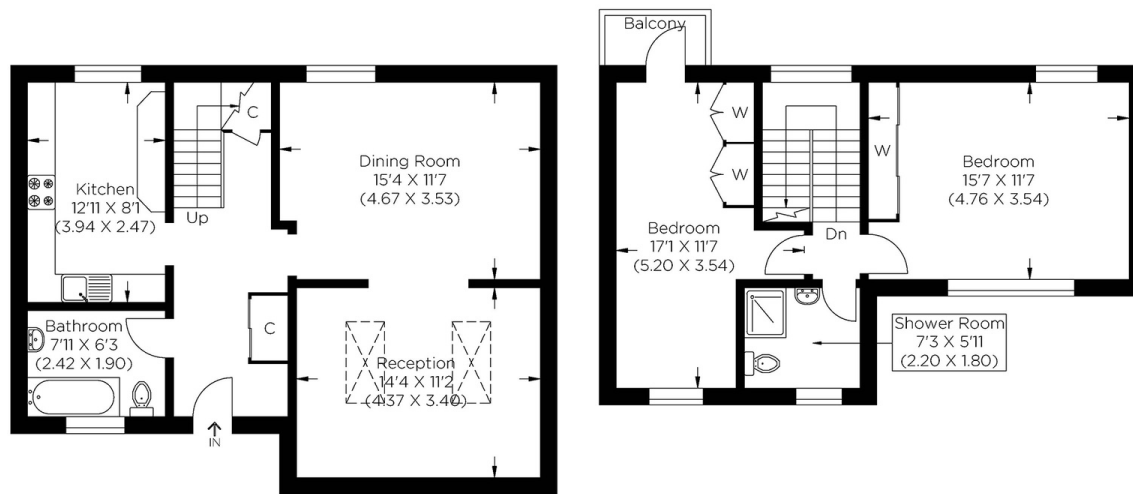


COLUMBIA ROAD E2

A wonderfully extended two bedroom duplex apartment, offering a wealth of space, in the sought after Columbia Road, E2. The current owners have intelligently added to the property, whilst adding in sky lights to flood the apartment with natural light. Resulting in a large reception room, or easily shut off to create two separate rooms, perfect for those needing an extra bedroom. With the large independent kitchen, you have the perfect home for entertaining. Upstairs, you have two double bedrooms, with the master in particular being a very impressive size in addition to the family bathroom. Situated in one of London's most famous streets, the location is just superb. With the famous flower markets every Sunday to the numerous boutique shops, the cafes and bars in Shoreditch, you have everything you need to enjoy East London's best amenities. In walking distance to highly rated schools and travel links such as: Shoreditch High Street, Liverpool Street and Old Street train stations.

Borough: Tower Hamlets* Council Tax: C* EPC: D Lease Term: 94 years* Service Charge: £1,745* Ground Rent: £10*

Nearest Station: Hoxton (0.26 miles) Material Information: www.alexneil.com/material-information



Lower Floor

Upper Floor

Approximate gross internal area
100.77 sq m / 1084.67 sq ft

Canary Wharf & Docklands Office
2 Westferry Road, Canary Wharf, London E14 8JT

t: 020 7537 9859 e: canarywharf@alexneil.com

Disclaimer: Property descriptions are subjective and used in good faith as an opinion rather than statements of fact. The owner provided information relating to title, tenure, service charges and ground rent information. Therefore, please make specific enquiries to ensure that our descriptions match your expectations of the property. Floor plan measurements are approximate and for illustrative purposes only. Furthermore, we have not tested any services, systems or appliances at this property. And we strongly recommend that you verify all the provided information on inspection and that your surveyor and conveyancer further confirm details. Also, market conditions and property values regularly fluctuate. And showcased sold properties demonstrate our previous successes rather than indicate live property values. *As advised by the owner. **Property sold subject to contract.



ALEX NEIL

ESTATE AGENTS SINCE 1984

2024 signifies our **40th Anniversary**, and we are immensely proud to have reached this impressive longevity milestone. In celebration, we launched an **exceptional promotion** for sellers, affording them increased marketing exposure for free!

40 years of expertise: With four decades of experience, we bring a wealth of knowledge and expertise. Our durability is a testament to the trust satisfied clients place in us. We understand the nuances of the diverse neighbourhoods we cover. Our local expertise allows us to provide tailored solutions, whether you're buying or selling, allowing you to move with confidence.



ALEX NEIL

ESTATE AGENTS SINCE 1984

www.alexneil.com