



GARWAY COURT E3
2 bedroom apartment

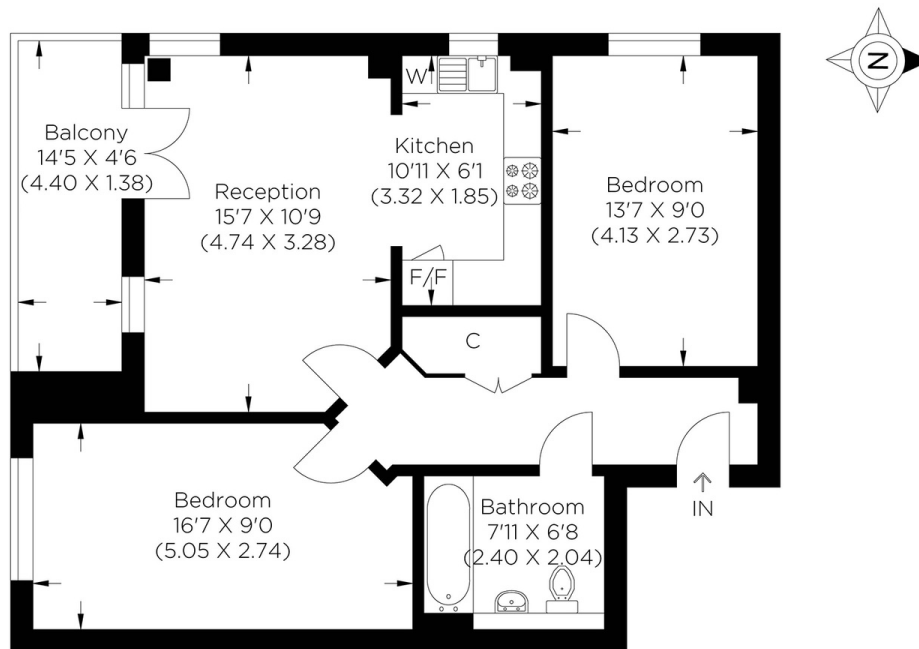
£400,000
SOLD



GARWAY COURT E3

A spacious two double bedroom apartment, with a mass of outside space, offered with no chain in Garway Court, Matilda Gardens, E3. Matilda Gardens is perfectly located with Roman Road and its amenities plus Bow Road Station just minutes away, giving you access to everything you need within minutes. With allocated parking you can leave the car at home and take a gentle walk to many of the shops, bars and restaurants located nearby. The accommodation itself comprises of two double bedrooms, an open plan style living - dining - kitchen area, ideal for those looking to entertain. Boasting an very large outside terrace, you can even spill the party outside in the warmer months. Completed by the modern bathroom, the home is in excellent condition through-out and ready to move straight into with no work needed.

Borough: Tower Hamlets* Council Tax: D* EPC: C Lease Term: 112 years* Service Charge: £2,080* Ground Rent: £200*
Nearest Station: Bow Road (0.28 miles) Material Information: www.alexneil.com/material-information



Ground Floor

Approximate gross internal area
61.85 sq m / 665.74 sq ft

Canary Wharf & Docklands Office
2 Westferry Road, Canary Wharf, London E14 8JT

t: 020 7537 9859 e: canarywharf@alexneil.com

Disclaimer: Property descriptions are subjective and used in good faith as an opinion rather than statements of fact. The owner provided information relating to title, tenure, service charges and ground rent information. Therefore, please make specific enquiries to ensure that our descriptions match your expectations of the property. Floor plan measurements are approximate and for illustrative purposes only. Furthermore, we have not tested any services, systems or appliances at this property. And we strongly recommend that you verify all the provided information on inspection and that your surveyor and conveyancer further confirm details. Also, market conditions and property values regularly fluctuate. And showcased sold properties demonstrate our previous successes rather than indicate live property values. *As advised by the owner. **Property sold subject to contract.



ALEX NEIL

ESTATE AGENTS SINCE 1984

2024 signifies our **40th Anniversary**, and we are immensely proud to have reached this impressive longevity milestone. In celebration, we launched an **exceptional promotion** for sellers, affording them increased marketing exposure for free!

40 years of expertise: With four decades of experience, we bring a wealth of knowledge and expertise. Our durability is a testament to the trust satisfied clients place in us. We understand the nuances of the diverse neighbourhoods we cover. Our local expertise allows us to provide tailored solutions, whether you're buying or selling, allowing you to move with confidence.



ALEX NEIL

ESTATE AGENTS SINCE 1984

www.alexneil.com