



COTMANDENE CRESCENT BR5
3 bedroom terraced house

£325,000
SOLD

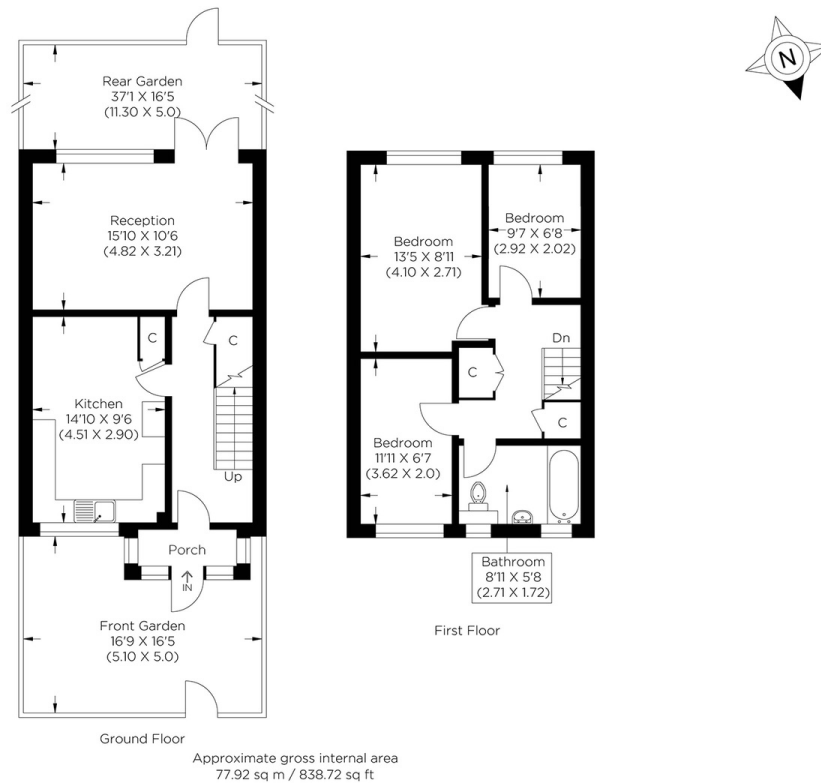


COTMANDENE CRESCENT BR5

This rarely available terraced house is in an enviable position on Cotmandene Crescent, Orpington BR5. Available for sale with no chain, Cotmandene Crescent is within walking distance of the scenic green open space of Watermeadows Open Space and Hoblingwell Wood Recreation Ground, providing a wonderful setting for a morning run or a stroll at the weekend. The diverse choice of superb eateries and gastropubs nearby allows for the perfect excuse to meet with friends. The property represents an ideal project for those seeking to personalise their new home. The accommodation comprises a large reception room with direct access to a large garden, a separate kitchen, three bedrooms and a three-piece family bathroom. The property also benefits from ample storage, a porch and a front garden. The owners have priced to sell, and we expect this property to sell quickly.

Borough: Bromley* Council Tax: D* EPC: TBA

Nearest Station: St Mary Cray (0.66 miles) Material Information: www.alexneil.com/material-information



Chislehurst & Bromley Office
61 High Street, Chislehurst BR7 5AF

t: 020 8297 8800 e: chislehurst@alexneil.com

Disclaimer: Property descriptions are subjective and used in good faith as an opinion rather than statements of fact. The owner provided information relating to title, tenure, service charges and ground rent information. Therefore, please make specific enquiries to ensure that our descriptions match your expectations of the property. Floor plan measurements are approximate and for illustrative purposes only. Furthermore, we have not tested any services, systems or appliances at this property. And we strongly recommend that you verify all the provided information on inspection and that your surveyor and conveyancer further confirm details. Also, market conditions and property values regularly fluctuate. And showcased sold properties demonstrate our previous successes rather than indicate live property values. *As advised by the owner. **Property sold subject to contract.

ALEX NEIL

ESTATE AGENTS SINCE 1984

2024 signifies our **40th Anniversary**, and we are immensely proud to have reached this impressive longevity milestone. In celebration, we launched an **exceptional promotion** for sellers, affording them increased marketing exposure for free!

40 years of expertise: With four decades of experience, we bring a wealth of knowledge and expertise. Our durability is a testament to the trust satisfied clients place in us. We understand the nuances of the diverse neighbourhoods we cover. Our local expertise allows us to provide tailored solutions, whether you're buying or selling, allowing you to move with confidence.



ALEX NEIL

ESTATE AGENTS SINCE 1984

www.alexneil.com