



LIME KILN WHARF E14
2 bedroom apartment

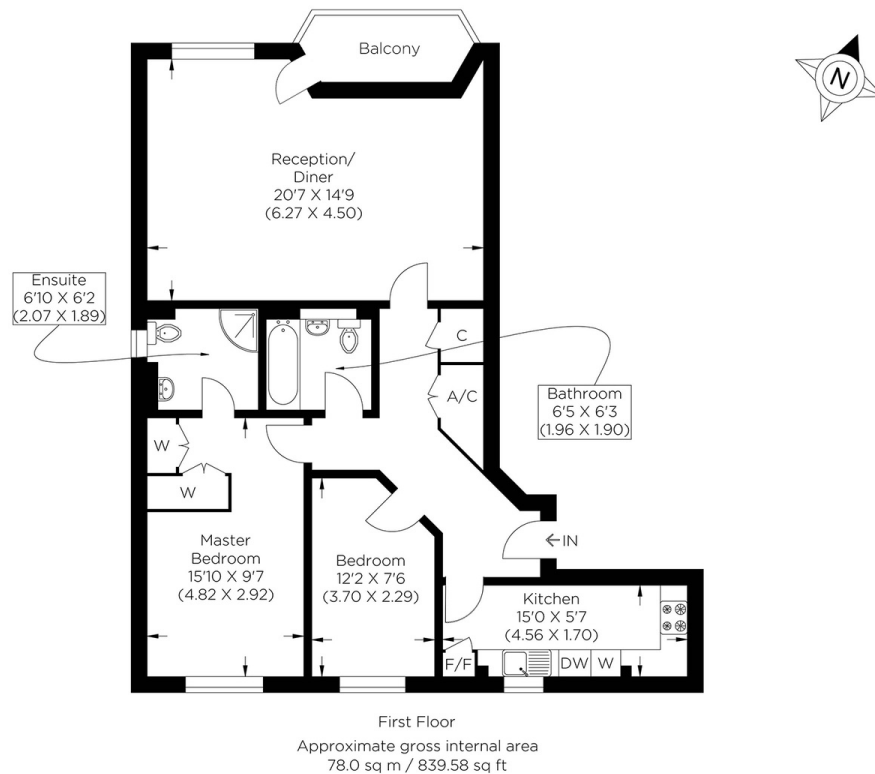
£550,000
SOLD



LIME KILN WHARF E14

This stunning two bedroom apartment is set within Lime Kiln Wharf, Three Colt Street, E14, a secure gated development. The apartment provides two generous size bedrooms, a spacious reception room, a separate kitchen and a private balcony offering views to a river inlet. This first-floor property offers the further benefits of two contemporary bathrooms, wood flooring throughout, ample storage and includes an allocated secure parking space. Located just behind the ever popular Narrow Street, communal gardens, terrace and lift access make the development a wonderful place to live, with several of the areas best restaurants within close walking distance. Westferry DLR is just a few minutes walk away allowing for quick and easy access into The City and Canary Wharf. Canary Wharf itself is just a short stroll away offering a vast choice of bars, shops, supermarkets and restaurants.

Borough: Tower Hamlets* Council Tax: E* EPC: D Lease Term: 966 years* Service Charge: £4,026* Ground Rent: TBA
Nearest Station: Westferry (0.15 miles) Material Information: www.alexneil.com/material-information



Canary Wharf & Docklands Office
2 Westferry Road, Canary Wharf, London E14 8JT

t: 020 7537 9859 e: canarywharf@alexneil.com

Disclaimer: Property descriptions are subjective and used in good faith as an opinion rather than statements of fact. The owner provided information relating to title, tenure, service charges and ground rent information. Therefore, please make specific enquiries to ensure that our descriptions match your expectations of the property. Floor plan measurements are approximate and for illustrative purposes only. Furthermore, we have not tested any services, systems or appliances at this property. And we strongly recommend that you verify all the provided information on inspection and that your surveyor and conveyancer further confirm details. Also, market conditions and property values regularly fluctuate. And showcased sold properties demonstrate our previous successes rather than indicate live property values. *As advised by the owner. **Property sold subject to contract.

ALEX NEIL

ESTATE AGENTS SINCE 1984

2024 signifies our **40th Anniversary**, and we are immensely proud to have reached this impressive longevity milestone. In celebration, we launched an **exceptional promotion** for sellers, affording them increased marketing exposure for free!

40 years of expertise: With four decades of experience, we bring a wealth of knowledge and expertise. Our durability is a testament to the trust satisfied clients place in us. We understand the nuances of the diverse neighbourhoods we cover. Our local expertise allows us to provide tailored solutions, whether you're buying or selling, allowing you to move with confidence.



ALEX NEIL

ESTATE AGENTS SINCE 1984

www.alexneil.com