



BANBURY POINT E14
2 bedroom apartment

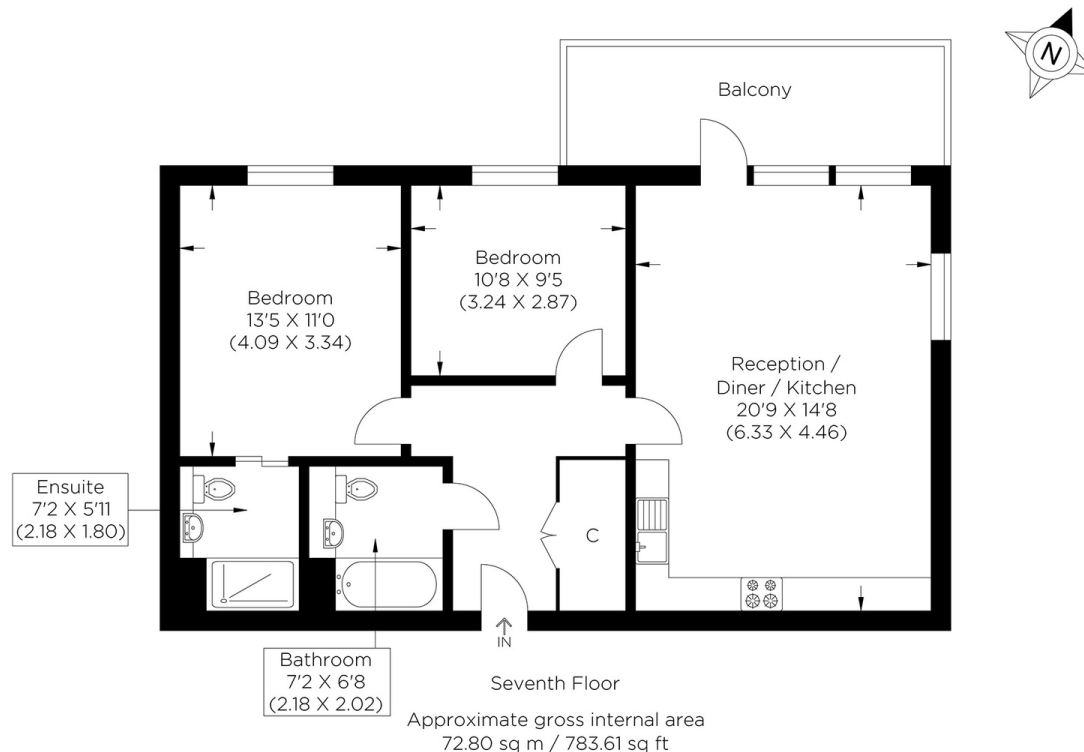
£525,000
SOLD



BANBURY POINT E14

Located on the seventh floor of this desirable development that is Banbury Point, Cording Street, Poplar E14. This exceptionally spacious and beautifully presented apartment sits on the top floor and comprises a large open-plan living space, fully integrated stylish kitchen, two large bedrooms (master with en-suite) and a modern family bathroom. The property further benefits from ample storage, a secure entry system, bicycle storage, concierge service, residents gym and a Roof Terrace. Banbury Point is enviably located close to Langdon Park and All Saints stations. Also close to vibrant Canary Wharf with lots of trendy bars and eateries, music venues, and high-end shops, the DLR services provide quick access to City Airport and Canary Wharf for the Jubilee Line and Elizabeth Line providing fast access to the City and Heathrow Airport. The building is EWS1 compliant, early viewing is advised!

Borough: Tower Hamlets* Council Tax: D* EPC: B Lease Term: 245 years* Service Charge: £2,242* Ground Rent: £300*
Nearest Station: Langdon Park (0.08 miles) Material Information: www.alexneil.com/material-information



Canary Wharf & Docklands Office
2 Westferry Road, Canary Wharf, London E14 8JT

t: 020 7537 9859 e: canarywharf@alexneil.com

Disclaimer: Property descriptions are subjective and used in good faith as an opinion rather than statements of fact. The owner provided information relating to title, tenure, service charges and ground rent information. Therefore, please make specific enquiries to ensure that our descriptions match your expectations of the property. Floor plan measurements are approximate and for illustrative purposes only. Furthermore, we have not tested any services, systems or appliances at this property. And we strongly recommend that you verify all the provided information on inspection and that your surveyor and conveyancer further confirm details. Also, market conditions and property values regularly fluctuate. And showcased sold properties demonstrate our previous successes rather than indicate live property values. *As advised by the owner. **Property sold subject to contract.

ALEX NEIL

ESTATE AGENTS SINCE 1984

2024 signifies our **40th Anniversary**, and we are immensely proud to have reached this impressive longevity milestone. In celebration, we launched an **exceptional promotion** for sellers, affording them increased marketing exposure for free!

40 years of expertise: With four decades of experience, we bring a wealth of knowledge and expertise. Our durability is a testament to the trust satisfied clients place in us. We understand the nuances of the diverse neighbourhoods we cover. Our local expertise allows us to provide tailored solutions, whether you're buying or selling, allowing you to move with confidence.



ALEX NEIL

ESTATE AGENTS SINCE 1984

www.alexneil.com