



SENTINEL BUILDING E15
2 bedroom apartment

£550,000
SOLD

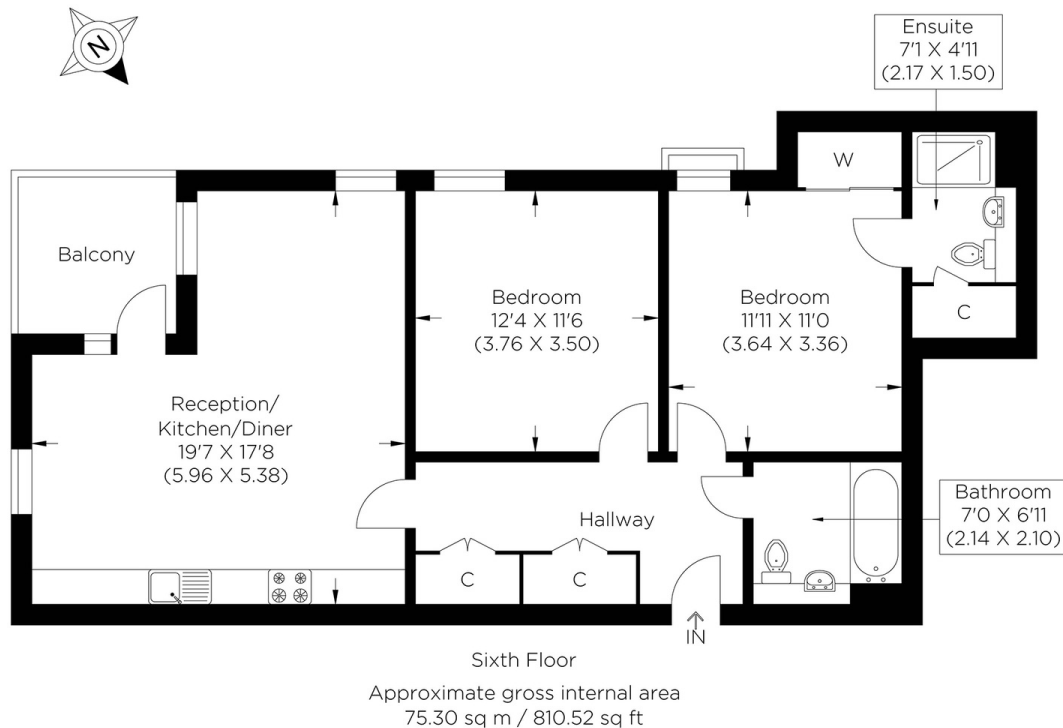


SENTINEL BUILDING E15

Positioned gloriously to enjoy maximum daylight sunlight on the secluded balcony is this wonderful apartment in Sentinel Building, Liberty Bridge Road, E15. Generously proportioned through-out the accommodation has been carefully designed to maximise the space and flow within the home. Comprising of a open plan style kitchen - dining - living room, with definitive areas for each, achieving an ideal place to host dinner parties or snuggle up to watch a film on quieter weekends. With two double bedrooms with master to en-suite, a family bathroom in addition to a vast amount of storage. Outside, you have the large private balcony, great for sun worshippers during the summer months. The location is simply superb with everything you need right on your doorstep. Westfield shopping centre is right on your doorstep with Stratford International Station and Stratford Station just a short walk away too. With a wide range amenities just a stone's throw away, you'll always have everything you need.

Borough: Newham* Council Tax: D* EPC: B Lease Term: 119 years* Service Charge: £1,951* Ground Rent: £350*

Nearest Station: Stratford International (0.31 miles) Material Information: www.alexneil.com/material-information



Canary Wharf & Docklands Office
2 Westferry Road, Canary Wharf, London E14 8JT

t: 020 7537 9859 e: canarywharf@alexneil.com

Disclaimer: Property descriptions are subjective and used in good faith as an opinion rather than statements of fact. The owner provided information relating to title, tenure, service charges and ground rent information. Therefore, please make specific enquiries to ensure that our descriptions match your expectations of the property. Floor plan measurements are approximate and for illustrative purposes only. Furthermore, we have not tested any services, systems or appliances at this property. And we strongly recommend that you verify all the provided information on inspection and that your surveyor and conveyancer further confirm details. Also, market conditions and property values regularly fluctuate. And showcased sold properties demonstrate our previous successes rather than indicate live property values. *As advised by the owner. **Property sold subject to contract.

ALEX NEIL

ESTATE AGENTS SINCE 1984

2024 signifies our **40th Anniversary**, and we are immensely proud to have reached this impressive longevity milestone. In celebration, we launched an **exceptional promotion** for sellers, affording them increased marketing exposure for free!

40 years of expertise: With four decades of experience, we bring a wealth of knowledge and expertise. Our durability is a testament to the trust satisfied clients place in us. We understand the nuances of the diverse neighbourhoods we cover. Our local expertise allows us to provide tailored solutions, whether you're buying or selling, allowing you to move with confidence.



ALEX NEIL

ESTATE AGENTS SINCE 1984

www.alexneil.com