



CHADWICK COURT E14
1 bedroom apartment

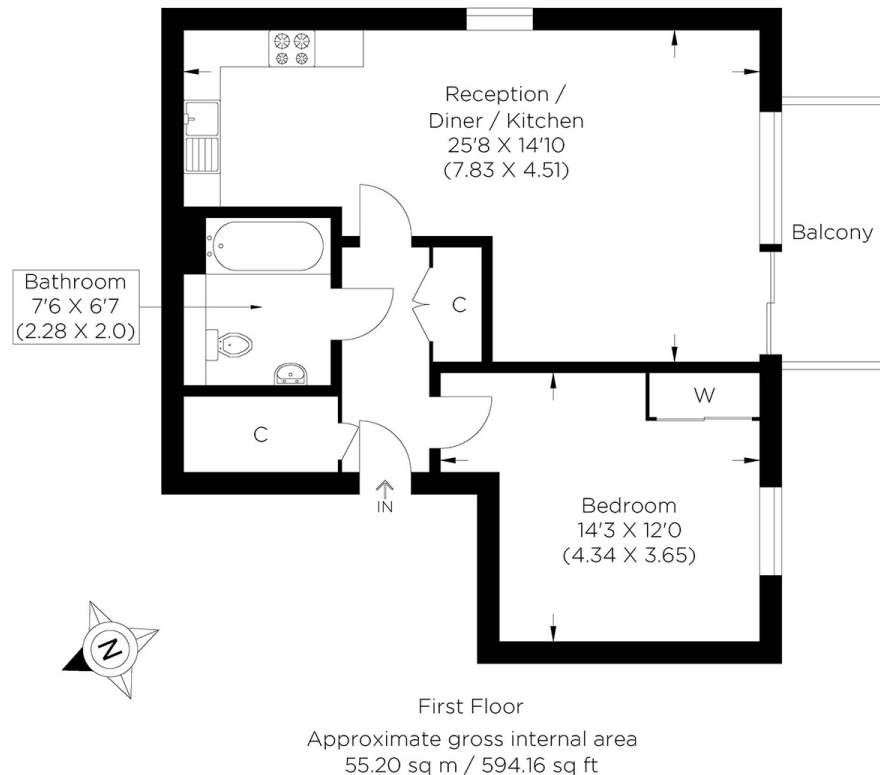
£325,000
SOLD



CHADWICK COURT E14

EWS1 APPROVED! A well-proportioned one-bedroom apartment ideally located for both Canary Wharf and the City set within Chadwick Court, Jonzen Walk, Poplar, E14. In the heart of a vibrant new community and only a short walk to Westferry, Langdon Park and All Saints DLR stations. New Festival Quarter is still unmistakably part of the unique landscape of this exciting area of London. This apartment benefits from an open plan kitchen with integrated appliances and wood flooring to the light, airy reception, dining area and hallway. Luxurious carpets in the bedroom with a fitted wardrobe, a bathroom and ample storage throughout. The balcony is ideal for your morning coffee or after-work drinks. Enjoy the resident-only gymnasium and a landscaped terrace to lounge in the sunshine. The development has a 24-hour concierge, secure ground-floor bike storage and CCTV cameras.

Borough: Tower Hamlets* Council Tax: C* EPC: B Lease Term: 238 years* Service Charge: £2,450* Ground Rent: £310*
Nearest Station: Langdon Park (0.33 miles) Material Information: www.alexneil.com/material-information



Canary Wharf & Docklands Office
2 Westferry Road, Canary Wharf, London E14 8JT

t: 020 7537 9859 e: canarywharf@alexneil.com

Disclaimer: Property descriptions are subjective and used in good faith as an opinion rather than statements of fact. The owner provided information relating to title, tenure, service charges and ground rent information. Therefore, please make specific enquiries to ensure that our descriptions match your expectations of the property. Floor plan measurements are approximate and for illustrative purposes only. Furthermore, we have not tested any services, systems or appliances at this property. And we strongly recommend that you verify all the provided information on inspection and that your surveyor and conveyancer further confirm details. Also, market conditions and property values regularly fluctuate. And showcased sold properties demonstrate our previous successes rather than indicate live property values. *As advised by the owner. **Property sold subject to contract.

ALEX NEIL

ESTATE AGENTS SINCE 1984

2024 signifies our **40th Anniversary**, and we are immensely proud to have reached this impressive longevity milestone. In celebration, we launched an **exceptional promotion** for sellers, affording them increased marketing exposure for free!

40 years of expertise: With four decades of experience, we bring a wealth of knowledge and expertise. Our durability is a testament to the trust satisfied clients place in us. We understand the nuances of the diverse neighbourhoods we cover. Our local expertise allows us to provide tailored solutions, whether you're buying or selling, allowing you to move with confidence.



ALEX NEIL

ESTATE AGENTS SINCE 1984

www.alexneil.com