



ST. MICHAELS COURT E14  
**1 bedroom apartment**

**£325,000**  
SOLD

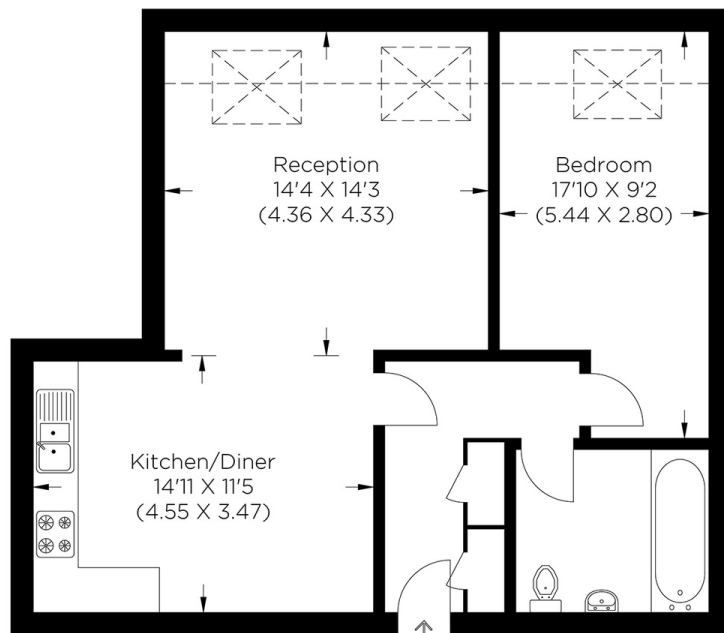




# ST. MICHAELS COURT E14

This stunning one-bedroom apartment is in the iconic St. Michaels Court conversion in the heart of St. Leonards Road, Poplar E14. The flat is chain free and has been recently refurbished and carefully designed to a very high standard, benefiting from a large bright reception room with high ceilings and exposed beams. The apartment further benefits from a large kitchen diner with integrated appliances, a large double bedroom with wooden features and a modern family bathroom. This rarely available property has been finished to a stunning standard throughout, with unique features making this apartment the perfect home for first-time buyers or investors. The nearest station is Langdon Park DLR for easy access to the City and Canary Wharf and its vast array of shopping, bars, cafes and eateries. The apartment is also situated close to the Limehouse Cut canal. We highly recommend organising your appointment to view it.

Borough: Tower Hamlets\* Council Tax: C\* EPC: C Lease Term: 153 years\* Service Charge: £2,000\* Ground Rent: TBA  
Nearest Station: Langdon Park (0.14 miles) Material Information: [www.alexneil.com/material-information](http://www.alexneil.com/material-information)



First Floor

Approximate gross internal area  
61.70 sq m / 664.13 sq ft



**Canary Wharf & Docklands Office**  
2 Westferry Road, Canary Wharf, London E14 8JT

t: 020 7537 9859 e: [canarywharf@alexneil.com](mailto:canarywharf@alexneil.com)

Disclaimer: Property descriptions are subjective and used in good faith as an opinion rather than statements of fact. The owner provided information relating to title, tenure, service charges and ground rent information. Therefore, please make specific enquiries to ensure that our descriptions match your expectations of the property. Floor plan measurements are approximate and for illustrative purposes only. Furthermore, we have not tested any services, systems or appliances at this property. And we strongly recommend that you verify all the provided information on inspection and that your surveyor and conveyancer further confirm details. Also, market conditions and property values regularly fluctuate. And showcased sold properties demonstrate our previous successes rather than indicate live property values. \*As advised by the owner. \*\*Property sold subject to contract.

## ALEX NEIL

ESTATE AGENTS SINCE 1984

2024 signifies our **40th Anniversary**, and we are immensely proud to have reached this impressive longevity milestone. In celebration, we launched an **exceptional promotion** for sellers, affording them increased marketing exposure for free!

**40 years of expertise:** With four decades of experience, we bring a wealth of knowledge and expertise. Our durability is a testament to the trust satisfied clients place in us. We understand the nuances of the diverse neighbourhoods we cover. Our local expertise allows us to provide tailored solutions, whether you're buying or selling, allowing you to move with confidence.



ALEX NEIL

ESTATE AGENTS SINCE 1984

[www.alexneil.com](http://www.alexneil.com)