



BURNABY COURT SE16  
**1 bedroom apartment**

**£290,000**  
SOLD

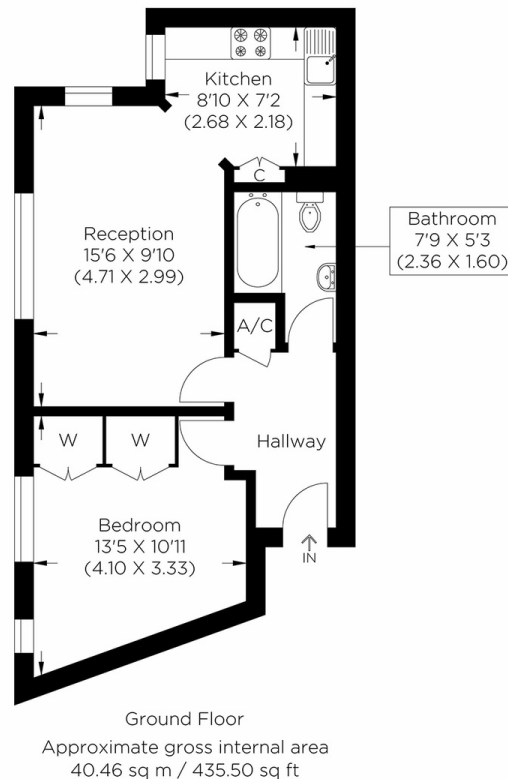




# BURNABY COURT SE16

This one-bedroom apartment with no chain is in Burnaby Court, Scott Lidgett Crescent, Bermondsey, SE16. The modern apartment has a spacious lounge, a semi-open-plan kitchen, a large bedroom and a modern bathroom. Benefits include parking, storage and a gated communal garden. This modern development is close to core transport links to the City, Canary Wharf and beyond. Bermondsey Jubilee Line Station is moments away, making this property perfect for commuters. In addition, the convenient location of this home is close to the amenities and prestigious eateries in Shad Thames. The immaculate presentation of this apartment and being offered with no chain would make it perfect for a first-time buyer or an investor.

Borough: Southwark\* Council Tax: C\* EPC: D Lease Term: 184 years\* Service Charge: £2,188\* Ground Rent: £150\*  
Nearest Station: Bermondsey (0.09 miles) Material Information: [www.alexneil.com/material-information](http://www.alexneil.com/material-information)



**Rotherhithe & Bermondsey Office**  
146 Lower Road, London SE16 2UG

t: 020 7237 6767 e: [rotherhithe@alexneil.com](mailto:rotherhithe@alexneil.com)

Disclaimer: Property descriptions are subjective and used in good faith as an opinion rather than statements of fact. The owner provided information relating to title, tenure, service charges and ground rent information. Therefore, please make specific enquiries to ensure that our descriptions match your expectations of the property. Floor plan measurements are approximate and for illustrative purposes only. Furthermore, we have not tested any services, systems or appliances at this property. And we strongly recommend that you verify all the provided information on inspection and that your surveyor and conveyancer further confirm details. Also, market conditions and property values regularly fluctuate. And showcased sold properties demonstrate our previous successes rather than indicate live property values. \*As advised by the owner. \*\*Property sold subject to contract.

## ALEX NEIL

ESTATE AGENTS SINCE 1984

2024 signifies our **40th Anniversary**, and we are immensely proud to have reached this impressive longevity milestone. In celebration, we launched an **exceptional promotion** for sellers, affording them increased marketing exposure for free!

**40 years of expertise:** With four decades of experience, we bring a wealth of knowledge and expertise. Our durability is a testament to the trust satisfied clients place in us. We understand the nuances of the diverse neighbourhoods we cover. Our local expertise allows us to provide tailored solutions, whether you're buying or selling, allowing you to move with confidence.



ALEX NEIL

ESTATE AGENTS SINCE 1984

[www.alexneil.com](http://www.alexneil.com)