



DENISON HOUSE E14
3 bedroom apartment

£650,000
SOLD

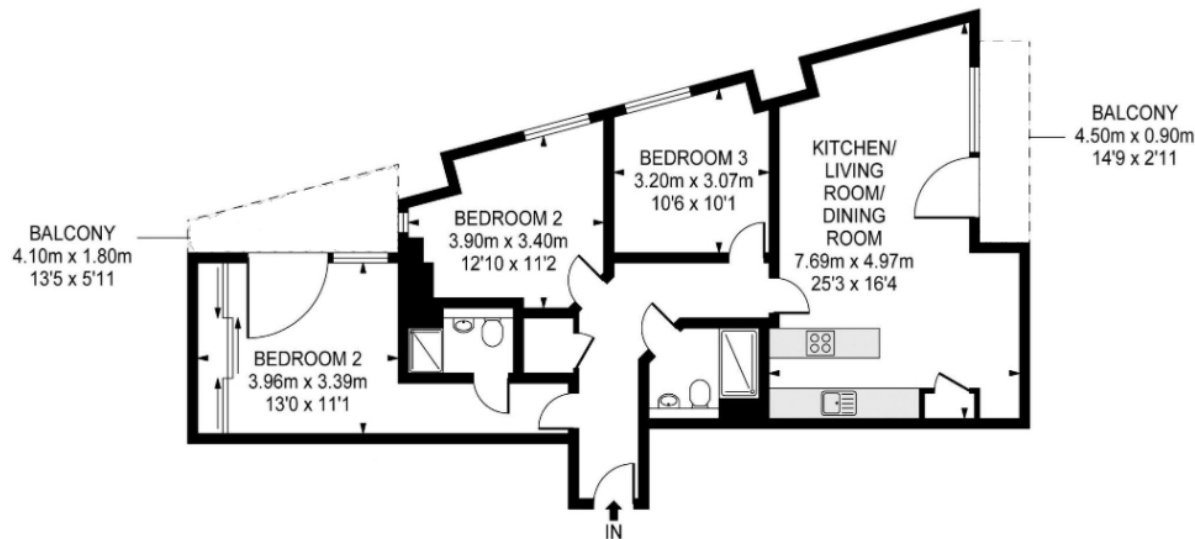


DENISON HOUSE E14

A spacious three bedroom apartment set within Denison House, Canary Wharf E14. Located on the third floor of Denison House within the Lantern's Court development which is located a couple of minutes walk to South Quay DLR, in the heart of Canary Wharf. The accommodation comprises 3 bedroom and 2 bathrooms, master bedroom with en-suite, a smart open plan kitchen, with integrated appliances, reception area with floor to ceiling windows boasting lots of natural light. The apartment is presented in excellent condition throughout, offered with a long lease and chain free. The apartment also benefits from a private balcony, a 24 Hour concierge and residents gym. The property is a 2 minute walk from South Quay DLR Station, which is served by the DLR line, offering frequent services to Canary Wharf. Canary Wharf Underground Station (zone 2) is also nearby, which is also on the DLR line, but has additional access to the Jubilee and Crossrail lines with direct services to Heathrow Airport.

Borough: Tower Hamlets* Council Tax: F* EPC: B Lease Term: 983 years* Service Charge: £4,495* Ground Rent: £350*
Nearest Station: South Quay (0.25 miles) Material Information: www.alexneil.com/material-information

APPROX GROSS INTERNAL FLOOR AREA INC. BALCONY AREA 1094 SQ FT - 101.70 SQ M



Canary Wharf & Docklands Office
2 Westferry Road, Canary Wharf, London E14 8JT

t: 020 7537 9859 e: canarywharf@alexneil.com

Disclaimer: Property descriptions are subjective and used in good faith as an opinion rather than statements of fact. The owner provided information relating to title, tenure, service charges and ground rent information. Therefore, please make specific enquiries to ensure that our descriptions match your expectations of the property. Floor plan measurements are approximate and for illustrative purposes only. Furthermore, we have not tested any services, systems or appliances at this property. And we strongly recommend that you verify all the provided information on inspection and that your surveyor and conveyancer further confirm details. Also, market conditions and property values regularly fluctuate. And showcased sold properties demonstrate our previous successes rather than indicate live property values. *As advised by the owner. **Property sold subject to contract.

ALEX NEIL

ESTATE AGENTS SINCE 1984

2024 signifies our **40th Anniversary**, and we are immensely proud to have reached this impressive longevity milestone. In celebration, we launched an **exceptional promotion** for sellers, affording them increased marketing exposure for free!

40 years of expertise: With four decades of experience, we bring a wealth of knowledge and expertise. Our durability is a testament to the trust satisfied clients place in us. We understand the nuances of the diverse neighbourhoods we cover. Our local expertise allows us to provide tailored solutions, whether you're buying or selling, allowing you to move with confidence.



ALEX NEIL

ESTATE AGENTS SINCE 1984

www.alexneil.com