



CROFTON ROAD SE5
1 bedroom apartment

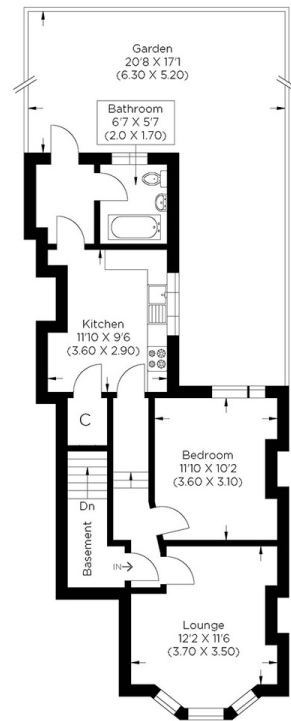
£450,000
SOLD



CROFTON ROAD SE5

This newly refurbished one-bedroom ground-floor apartment in highly desirable Crofton Road, Camberwell SE5, exudes character and charm. The convenient setting of this stunning property matches the stylish accommodation, making it the perfect purchase. Between the open space of Warwick Gardens and Lucas Gardens, offering an excellent backdrop for a weekend stroll, East Dulwich and West Dulwich Stations offer fantastic travel connections. The chain-free apartment comprises a large reception room with wood flooring, a separate kitchen/diner with brand-new integrated appliances, a large double bedroom and a newly refurbished family bathroom. There is a large garden, ample storage and original period features, including sash windows and high ceilings. We highly recommend your earliest appointment to view this home.

Borough: Southwark* Council Tax: C* EPC: TBA Lease Term: 125 years* Service Charge: £199* Ground Rent: TBA
Nearest Station: Peckham Rye (0.42 miles) Material Information: www.alexneil.com/material-information



Approximate gross internal area
52.02 sq m / 559.93 sq ft



Rotherhithe & Bermondsey Office
146 Lower Road, London SE16 2UG

t: 020 7237 6767 e: rotherhithe@alexneil.com

Disclaimer: Property descriptions are subjective and used in good faith as an opinion rather than statements of fact. The owner provided information relating to title, tenure, service charges and ground rent information. Therefore, please make specific enquiries to ensure that our descriptions match your expectations of the property. Floor plan measurements are approximate and for illustrative purposes only. Furthermore, we have not tested any services, systems or appliances at this property. And we strongly recommend that you verify all the provided information on inspection and that your surveyor and conveyancer further confirm details. Also, market conditions and property values regularly fluctuate. And showcased sold properties demonstrate our previous successes rather than indicate live property values. *As advised by the owner. **Property sold subject to contract.

ALEX NEIL

ESTATE AGENTS SINCE 1984