



SOUTHMERE HOUSE E15
1 bedroom apartment

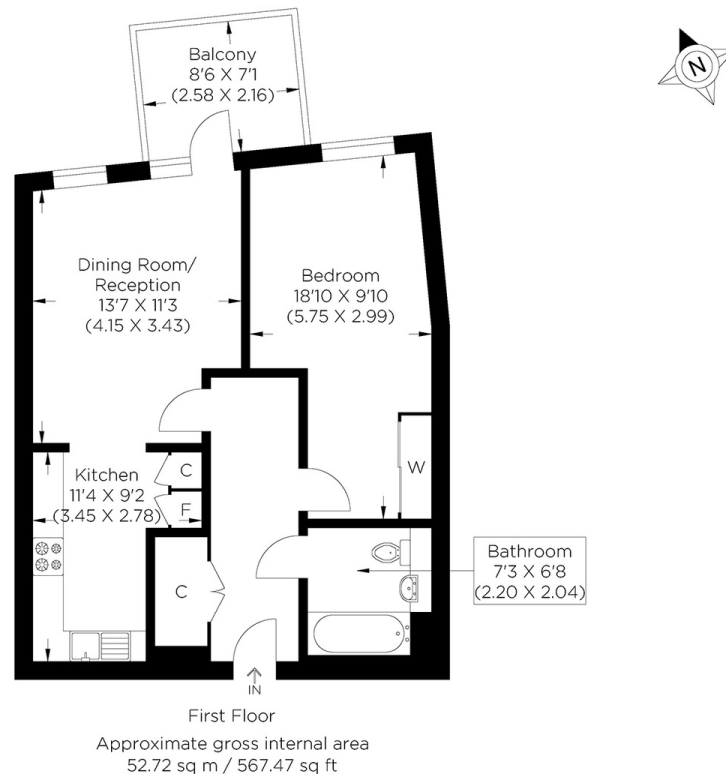
£375,000
SOLD



SOUTHMERE HOUSE E15

An impeccable one-bedroom apartment finished to the highest standard with canal views in sought-after Southmere House, Legacy Wharf, Highland Street, Stratford E15. The generous accommodation of around 550 sq ft boasts a stunning open-plan kitchen with integrated appliances opening to the vast living area with a high-spec finish, a double bedroom with built-in wardrobes and a stylish bathroom. The apartment enjoys a large private balcony overlooking Bow Back Rivers, the perfect place to sit and unwind after a long day. The resident's facilities include a concierge service, a gymnasium, communal gardens, and a roof terrace. Southmere House is well placed for Pudding Mill DLR Station and Stratford Underground Station whilst also within easy reach of well-connected bus stops. Stratford is an increasingly sought-after residential area of East London, with Hackney Wick, Victoria Park and Bow easily accessible.

Borough: Newham* Council Tax: C* EPC: TBA Lease Term: 994* Service Charge: £2,000* Ground Rent: £300*



Canary Wharf & Docklands Office
2 Westferry Road, Canary Wharf, London E14 8JT

t: 020 7537 9859 e: canarywharf@alexneil.com

Disclaimer: Property descriptions are subjective and used in good faith as an opinion rather than statements of fact. The owner provided information relating to title, tenure, service charges and ground rent information. Therefore, please make specific enquiries to ensure that our descriptions match your expectations of the property. Floor plan measurements are approximate and for illustrative purposes only. Furthermore, we have not tested any services, systems or appliances at this property. And we strongly recommend that you verify all the provided information on inspection and that your surveyor and conveyancer further confirm details. Also, market conditions and property values regularly fluctuate. And showcased sold properties demonstrate our previous successes rather than indicate live property values. *As advised by the owner. **Property sold subject to contract.

ALEX NEIL

ESTATE AGENTS SINCE 1984