



PENINSULA COURT E14
1 bedroom duplex apartment

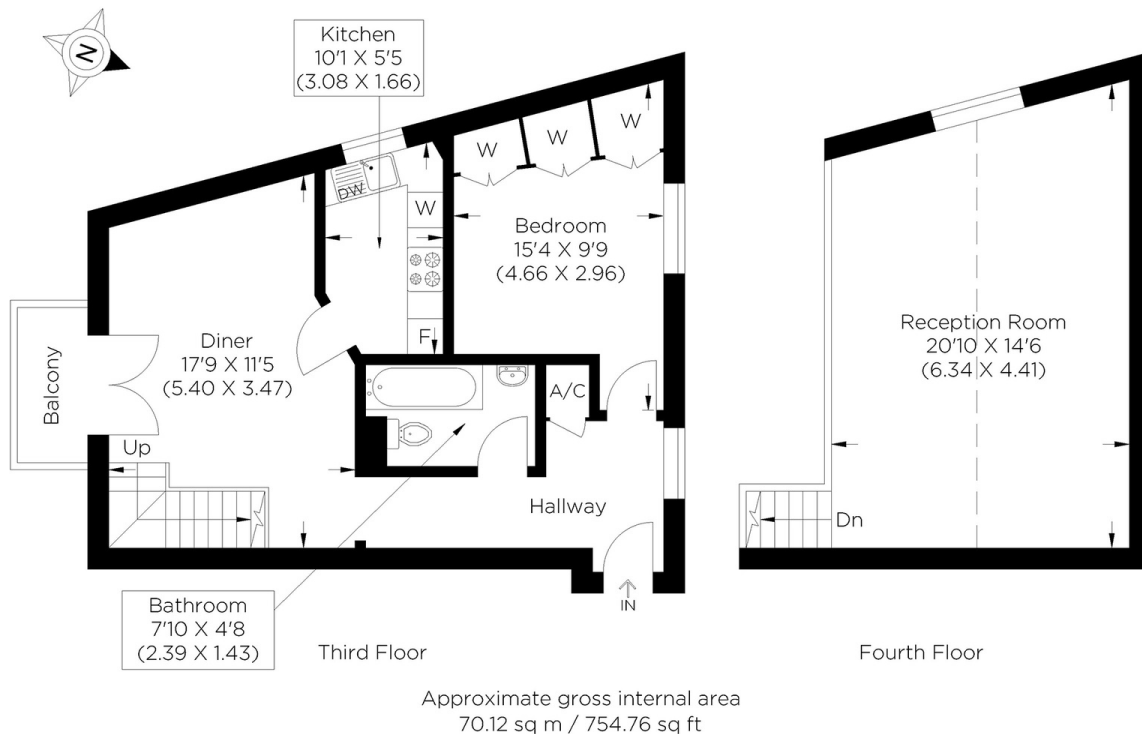
£425,000
SOLD



PENINSULA COURT E14

A well presented modern one bedroom duplex apartment set within this popular development Peninsula Court, Isle of Dogs, E14, well positioned for Crossharbour DLR station and Canary Wharf. The property boasts a spacious double bedroom and a generous reception room with access to a private balcony. A separate fitted kitchen with integrated appliances and a modern three-piece bathroom are also featured. Further benefits include a separate room accessed from the lounge up stairs which is currently used as a second reception space, there is also a residential communal courtyard and an allocated secure parking space. Peninsula Court is located near an array of shops and amenities on East Ferry Road as well as Mudchute Park and the Millwall Docks.

Borough: Tower Hamlets* Council Tax: D* EPC: C Lease Term: 970 years* Service Charge: £2,800* Ground Rent: £75*
Nearest Station: Crossharbour (0.05 miles) Material Information: www.alexneil.com/material-information



Canary Wharf & Docklands Office
2 Westferry Road, Canary Wharf, London E14 8JT

t: 020 7537 9859 e: canarywharf@alexneil.com

Disclaimer: Property descriptions are subjective and used in good faith as an opinion rather than statements of fact. The owner provided information relating to title, tenure, service charges and ground rent information. Therefore, please make specific enquiries to ensure that our descriptions match your expectations of the property. Floor plan measurements are approximate and for illustrative purposes only. Furthermore, we have not tested any services, systems or appliances at this property. And we strongly recommend that you verify all the provided information on inspection and that your surveyor and conveyancer further confirm details. Also, market conditions and property values regularly fluctuate. And showcased sold properties demonstrate our previous successes rather than indicate live property values. *As advised by the owner. **Property sold subject to contract.

ALEX NEIL

ESTATE AGENTS SINCE 1984

2024 signifies our **40th Anniversary**, and we are immensely proud to have reached this impressive longevity milestone. In celebration, we launched an **exceptional promotion** for sellers, affording them increased marketing exposure for free!

40 years of expertise: With four decades of experience, we bring a wealth of knowledge and expertise. Our durability is a testament to the trust satisfied clients place in us. We understand the nuances of the diverse neighbourhoods we cover. Our local expertise allows us to provide tailored solutions, whether you're buying or selling, allowing you to move with confidence.



ALEX NEIL

ESTATE AGENTS SINCE 1984

www.alexneil.com