



BANBURY POINT E14
1 bedroom apartment

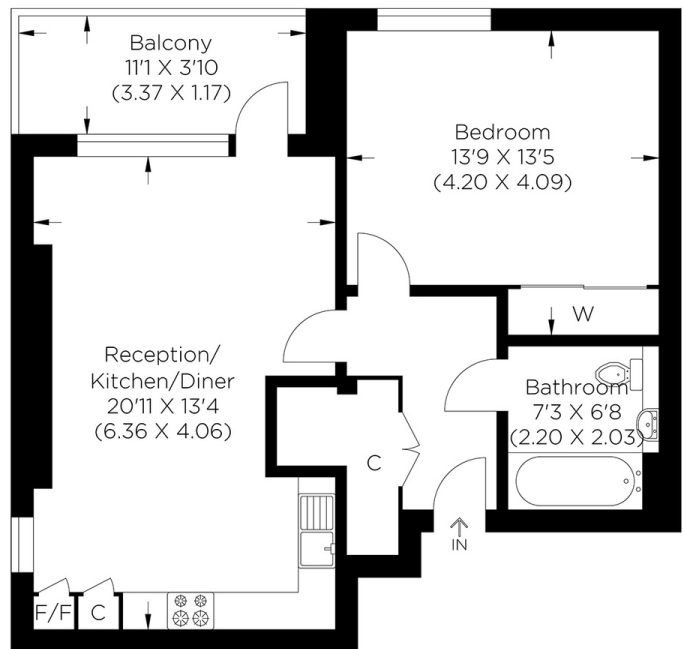
£375,000
SOLD



BANBURY POINT E14

Set in the desirable Banbury Point in Cording Street, Poplar E14 is this fantastic, substantial one-bedroom property with a high specification and a large private balcony. On the second floor, this beautifully finished property benefits from floor-to-ceiling windows and a stylish contemporary feel, panoramic skyline views and is presented in excellent order throughout. The accommodation includes a generous bedroom with ample storage, a luxuriously appointed three-piece bathroom, dual-aspect living space and a fully integrated open-plan kitchen. The apartment also has the benefit of an on-site concierge, secure cycle storage, roof garden access and an on-site residents' gym. The nearest station is Langdon Park DLR for easy access to the City and Canary Wharf and its vast array of shopping, bars, cafes and eateries. The apartment is also situated close to the Limehouse Cut canal.

Borough: Tower Hamlets* Council Tax: C* EPC: TBA Lease Term: 245 years* Service Charge: £2,500* Ground Rent: £500*
Nearest Station: Langdon Park (0.08 miles) Material Information: www.alexneil.com/material-information



Second Floor

Approximate gross internal area
54.10 sq m / 582.32 sq ft



Canary Wharf & Docklands Office
2 Westferry Road, Canary Wharf, London E14 8JT

t: 020 7537 9859 e: canarywharf@alexneil.com

Disclaimer: Property descriptions are subjective and used in good faith as an opinion rather than statements of fact. The owner provided information relating to title, tenure, service charges and ground rent information. Therefore, please make specific enquiries to ensure that our descriptions match your expectations of the property. Floor plan measurements are approximate and for illustrative purposes only. Furthermore, we have not tested any services, systems or appliances at this property. And we strongly recommend that you verify all the provided information on inspection and that your surveyor and conveyancer further confirm details. Also, market conditions and property values regularly fluctuate. And showcased sold properties demonstrate our previous successes rather than indicate live property values. *As advised by the owner. **Property sold subject to contract.

ALEX NEIL

ESTATE AGENTS SINCE 1984

2024 signifies our **40th Anniversary**, and we are immensely proud to have reached this impressive longevity milestone. In celebration, we launched an **exceptional promotion** for sellers, affording them increased marketing exposure for free!

40 years of expertise: With four decades of experience, we bring a wealth of knowledge and expertise. Our durability is a testament to the trust satisfied clients place in us. We understand the nuances of the diverse neighbourhoods we cover. Our local expertise allows us to provide tailored solutions, whether you're buying or selling, allowing you to move with confidence.



ALEX NEIL

ESTATE AGENTS SINCE 1984

www.alexneil.com