



LOTUS HOUSE E14
2 bedroom apartment

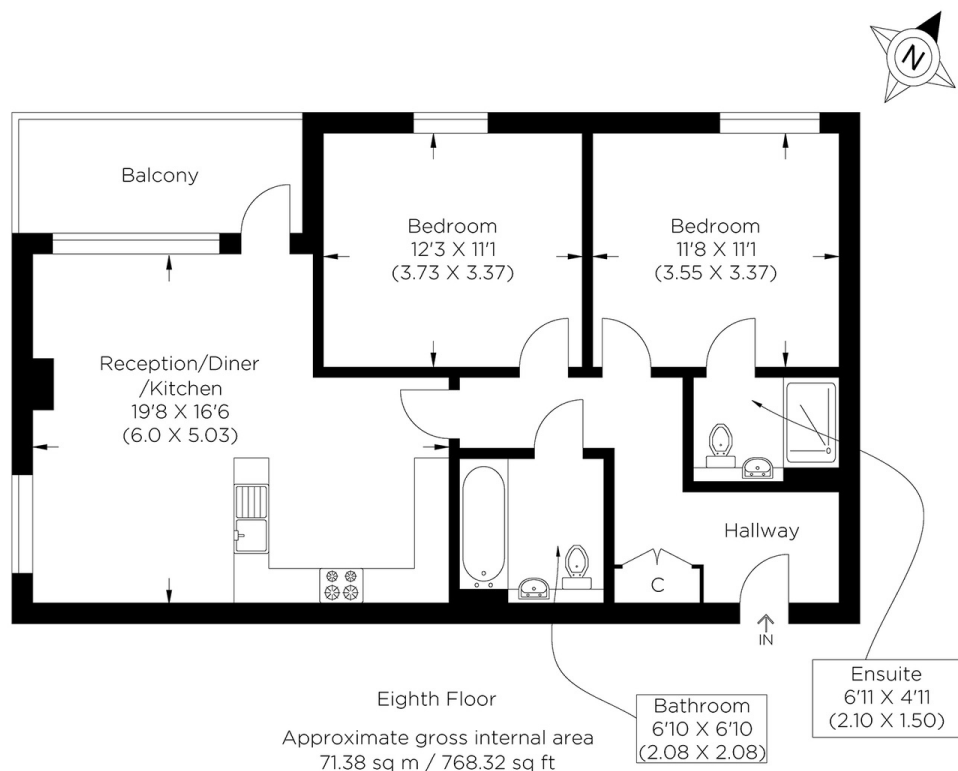
£550,000
SOLD



LOTUS HOUSE E14

A beautifully styled apartment set within the desirable Lotus House, Ovex Close, Isle of Dogs E14, a riverside development. Immaculately presented, the two-bedroom apartment comprises a spacious open-plan living/kitchen space leading to a larger-than-average balcony with stunning views towards Canary Wharf and side views of the O2 and the River Thames. Both bedrooms are of a fantastic size offering plenty of floor space and storage, the master bedroom benefits from an ensuite and a separate family bathroom. This landmark riverfront development overlooks the O2 Arena with a range of facilities, shops, and amenities right on your doorstep, a children's play area and communal outdoor spaces. This development is situated near the River Thames in Canary Wharf, being only a short walk to Canary Wharf, Crossharbour and South Quay station, this development is within easy reach of the City, Stratford & Canary Wharf via the DLR and Elizabeth line.

Borough: Tower Hamlets* Council Tax: E* EPC: B Lease Term: 244 years* Service Charge: £2,209* Ground Rent: £350*
Nearest Station: Crossharbour (0.34 miles) Material Information: www.alexneil.com/material-information



Canary Wharf & Docklands Office
2 Westferry Road, Canary Wharf, London E14 8JT

t: 020 7537 9859 e: canarywharf@alexneil.com

Disclaimer: Property descriptions are subjective and used in good faith as an opinion rather than statements of fact. The owner provided information relating to title, tenure, service charges and ground rent information. Therefore, please make specific enquiries to ensure that our descriptions match your expectations of the property. Floor plan measurements are approximate and for illustrative purposes only. Furthermore, we have not tested any services, systems or appliances at this property. And we strongly recommend that you verify all the provided information on inspection and that your surveyor and conveyancer further confirm details. Also, market conditions and property values regularly fluctuate. And showcased sold properties demonstrate our previous successes rather than indicate live property values. *As advised by the owner. **Property sold subject to contract.

ALEX NEIL

ESTATE AGENTS SINCE 1984

2024 signifies our **40th Anniversary**, and we are immensely proud to have reached this impressive longevity milestone. In celebration, we launched an **exceptional promotion** for sellers, affording them increased marketing exposure for free!

40 years of expertise: With four decades of experience, we bring a wealth of knowledge and expertise. Our durability is a testament to the trust satisfied clients place in us. We understand the nuances of the diverse neighbourhoods we cover. Our local expertise allows us to provide tailored solutions, whether you're buying or selling, allowing you to move with confidence.



ALEX NEIL

ESTATE AGENTS SINCE 1984

www.alexneil.com