



WIMHURST COURT E14  
**3 bedroom apartment**

**£625,000**  
SOLD

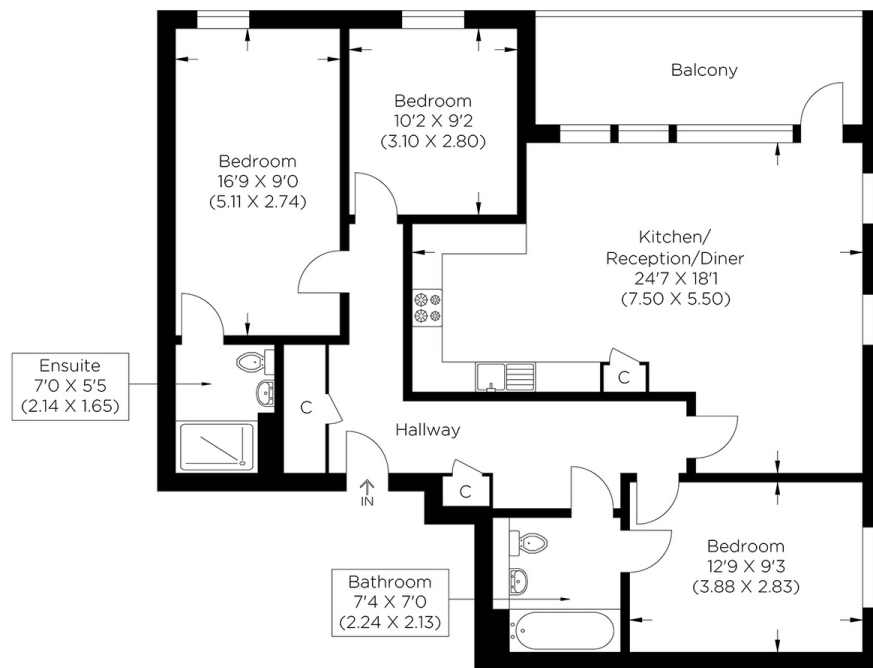




# WIMHURST COURT E14

Wimhurst Court, Poplar, E14, is a stunning waterside development with excellent travel links. This three-bedroom apartment on the 8th floor offers a large, south-facing balcony with waterfront views over the park, the City and Canary Wharf. The property has been finished to an excellent standard, having added touches to create a fantastic family home; perfect for a first-time buyer or a buyer looking to upsize. All three bedrooms are double size and there are two bathrooms. The apartment has been designed with generous storage space and includes high-spec, integrated appliances. The area boasts a range of transport links with the DLR, the newly opened Elizabeth, Central, and Jubilee lines all within walking distance. Further benefits of the area include excellent schooling, the open green space of Bartlett Park just opposite its community hub and popular coffee/brunch spot E5 bakehouse, and direct access onto the canal from which the river Thames can be reached in a 15-minute walk.

Borough: Tower Hamlets\* Council Tax: E\* EPC: TBA Lease Term: 245 years\* Service Charge: £1,796\* Ground Rent: £558\*  
Nearest Station: Langdon Park (0.32 miles) Material Information: [www.alexneil.com/material-information](http://www.alexneil.com/material-information)



Eighth Floor  
Approximate gross internal area  
92.55 sq m / 996.19 sq ft



**Canary Wharf & Docklands Office**  
2 Westferry Road, Canary Wharf, London E14 8JT

t: 020 7537 9859 e: [canarywharf@alexneil.com](mailto:canarywharf@alexneil.com)

Disclaimer: Property descriptions are subjective and used in good faith as an opinion rather than statements of fact. The owner provided information relating to title, tenure, service charges and ground rent information. Therefore, please make specific enquiries to ensure that our descriptions match your expectations of the property. Floor plan measurements are approximate and for illustrative purposes only. Furthermore, we have not tested any services, systems or appliances at this property. And we strongly recommend that you verify all the provided information on inspection and that your surveyor and conveyancer further confirm details. Also, market conditions and property values regularly fluctuate. And showcased sold properties demonstrate our previous successes rather than indicate live property values. \*As advised by the owner. \*\*Property sold subject to contract.

# ALEX NEIL

ESTATE AGENTS SINCE 1984

2024 signifies our **40th Anniversary**, and we are immensely proud to have reached this impressive longevity milestone. In celebration, we launched an **exceptional promotion** for sellers, affording them increased marketing exposure for free!

**40 years of expertise:** With four decades of experience, we bring a wealth of knowledge and expertise. Our durability is a testament to the trust satisfied clients place in us. We understand the nuances of the diverse neighbourhoods we cover. Our local expertise allows us to provide tailored solutions, whether you're buying or selling, allowing you to move with confidence.



ALEX NEIL

ESTATE AGENTS SINCE 1984

[www.alexneil.com](http://www.alexneil.com)